

Voorzitter T.A. Jurriens, Johan Ellenbergerstraat 29, 9746 AK Groningen
Tel. 050 - 5732937. E-mail: theo.jurriens@tiscali.nl

Secretaris/
Waarnemingsleider G. Comello, Kapteyn Instituut, Postbus 800, 9700 AV
Groningen
Tel. 050 - 3634050. E-mail: comello@astro.rug.nl

Penningmeester G. Kuipers, Israelsstraat 5, 9801 EH Zuidhorn
Tel: 0594 - 504902. E-mail: g.kuipers@ict.azg.nl

Recorder a.i./
Redactie a.i. E. van Ballegoij, De Rogge 6, 5384 XD Heesch
Tel: 0412 - 456746. E-mail: aavso.id.bve@home.nl

Bestuurslid a.i. G. Gilein, D.Noteboomstraat 39, 2202 RN Noordwijk
Tel: 071 - 3615555. E-mail: ggilein@wxs.nl



Variabilia verschijnt in principe 4x per jaar
Contributie: € 10,00 per jaar te voldoen op Postbanknummer 489829 t.g.v.
Penningmeester Werkgroep Veranderlijke Sterren, Postbus 800, 9700 AV Groningen

Variabilia nr. 71

Oktober 2002

	Code	Jul 02	Aug 02	Sep 02	Totaal
Reinder Bouma	BMU	38	52	91	181
Erwin van Ballegoij	BVE	20		142	162
Georg Comello	CMG	773	765	818	2356
Guus Gilein	GGU			143	143
Alex Scholten	SAQ			3	3
Edwin van Dijk	VDE	21	11	70	102
		852	828	1267	2947

Redactioneel

Juli en augustus zijn vakantie maanden. De grijze nachten beperken de waarneem mogelijkheden, met name in juli. Mogelijk dat daarom veel waarnemers in deze maanden weinig tot geen schattingen verricht hebben. September liet een opleving zien. De langere nachten en het goede nazomerweer zijn daar debet aan. Het afgelopen kwartaal werden in totaal 2947 schattingen verricht aan 406 veranderlijken.

Op het veranderlijkenfront was het lange tijd rustig. Deze rust werd verstoord door de verschijning van twee heldere novae. Helaas verschenen deze twee novae in Sagittarius, een sterrenbeeld dat zich in september laag boven de zuidoostelijke horizon bevindt. Desondanks zijn deze twee sterren door leden van onze werkgroep waargenomen. Aan V4742 Sgr werden door twee waarnemers (BMU en VDE) twee schattingen verricht, terwijl aan V4743 Sgr door vijf waarnemers (BMU, BVE, CMG, GGU en SAQ) in september tien waarnemingen werden verricht. De laatste nova wordt ook nu nog door enkele van onze leden waargenomen.

Rest ons u de komende maanden veel waarneemplezier toe te wensen.

De volgende tabel bevat de waarnemingen uit de periode juli - september 2002.

Elke reeks waarnemingen gedaan aan een ster begint met het Harvard nummer, gevolgd door de naam en het type van de ster, afkomstig uit de validation file van de AAVSO oktober 2002. In de kolommen staan vermeld de Juliaanse Datum, de helderheid en de waarnemer. Voor de JD geldt: JD = JD + 2.452.000

0004+51		500.5	14.3	CMG	482.5	8.9	CMG	489.404	11.6	BMU	0112+08						
SS CAS	M	531.5	11.7	BVE	500.5	9.3	CMG	490.484	12.1	CMG	S PSC	M					
467.5	13.2	CMG	533.3	11.9	CMG	505.5	9.4	CMG	491.419	13.0	BMU	500.5	14.9				
475.5	13.3	CMG	541.4	11.2	CMG	533.3	9.7	CMG	500.446	11.3	CMG	-----	-----				
482.5	13.2	CMG	547.4	10.8	CMG	541.4	10.0	CMG	501.401	11.6	BMU	0112+72					
490.4	13.1	CMG	548.4	10.7	BVE	547.4	10.5	CMG	502.374	12.2	CMG	S CAS	M				
499.4	11.9	CMG	-----	-----	-----	-----	-----	-----	503.377	13.5	CMG	467.5	9.5				
505.4	11.4	CMG	0019-09		0044+35			503.568	13.3	BMU	475.5	9.5	CMG				
530.4	10.9	CMG	S CET	M	V AND	M		505.449	13.9	CMG	475.5	9.5	CMG				
531.4	10.5	GGU	531.5	9.1	BVE	470.5	14.3	CMG	523.353	11.6	BMU	482.4	9.6				
541.4	10.2	CMG	-----	-----	-----	-----	-----	523.356	11.4	VDE	490.4	9.7	CMG				
547.3	10.3	CMG	0022+30		500.5	12.1	CMG	524.349	10.8	BMU	500.4	9.9	CMG				
-----	-----	-----	YZ AND	M	505.5	11.7	CMG	524.351	11.1	VDE	505.4	10.1	CMG				
0008+62		482.5	12.6	CMG	533.3	10.6	CMG	526.418	11.1	BMU	530.4	10.4	CMG				
UX CAS	SRB	500.5	13.6	CMG	541.4	10.2	CMG	529.333	13.0	BMU	531.5	10.4	BVE				
471.5	10.8	CMG	-----	-----	547.4	9.7	CMG	529.335	12.9	VDE	541.4	10.9	CMG				
483.4	10.7	CMG	0027+25A		-----	-----	-----	530.430	13.7	BMU	547.3	11.2	CMG				
493.4	10.8	CMG	TJ AND	M	0046+33			530.431	13.9	VDE	-----	-----	-----				
500.5	10.8	CMG	467.5	8.7	CMG	500.5	12.6	CMG	530.440	13.8	BVE	0113+79					
-----	-----	-----	475.6	8.8	CMG	505.5	11.9	CMG	530.440	13.8	CMG	AE CEP	M				
0009+28		482.5	8.9	CMG	533.3	10.7	CMG	531.480	13.8	BVE	467.5	15.4	CMG				
UW AND	M	493.4	8.9	CMG	541.4	10.4	CMG	533.342	14.1	CMG	482.5	14.2	CMG				
500.5	13.8	CMG	500.5	9.5	CMG	547.4	10.1	CMG	541.397	11.6	CMG	489.4	13.5	CMG			
533.3	13.4	CMG	505.4	9.9	CMG	-----	-----	547.312	14.0	BMU	500.4	12.2	CMG				
541.4	12.9	CMG	533.3	11.3	CMG	0047+46A		547.315	13.9	VDE	505.4	12.0	CMG				
547.4	12.9	CMG	541.4	11.5	CMG	RV CAS	M	547.386	14.2	CMG	530.4	11.0	CMG				
-----	-----	-----	547.4	11.8	CMG	467.5	14.5	CMG	548.283	14.0	CMG	541.4	11.2	CMG			
0010+46		-----	-----	-----	503.4	15.2	CMG	548.374	13.8	BVE	547.3	11.2	CMG				
X AND	M	0030+57			-----	-----	-----	-----	-----	-----	-----	-----	-----	-----			
467.5	10.6	CMG	UW CAS	M	0049+58			0059+53			0116+38						
475.6	10.7	CMG	471.5	10.4	CMG	W CAS	M	V723 CAS	NB		TX AND	M					
482.5	10.9	CMG	482.5	10.5	CMG	467.5	11.3	CMG	471.512	14.7	CMG	470.5	11.7	CMG			
493.4	11.4	CMG	490.4	10.8	CMG	475.5	11.5	CMG	-----	-----	-----	483.4	11.8	CMG			
500.5	11.7	CMG	500.4	11.9	CMG	482.5	11.6	CMG	0101-02			500.5	11.7	CMG			
505.4	11.9	CMG	505.4	12.0	CMG	490.4	11.8	CMG	Z CET	M		533.3	11.7	CMG			
531.5	12.8	BVE	530.4	12.8	CMG	499.4	12.1	CMG	501.5	13.0	CMG	548.3	11.8	CMG			
533.3	13.8	CMG	541.4	13.2	CMG	505.4	12.0	CMG	531.5	10.7	BVE	-----	-----	-----			
548.4	13.1	BVE	547.3	13.4	CMG	522.4	12.2	GGU	-----	-----	-----	0117+12					
-----	-----	-----	-----	-----	530.4	12.3	CMG	0106+21A			U PSC	M					
0017+26		531.4	12.3	GGU	531.4	12.3	GGU	X PSC	M		475.6	11.7	CMG				
T AND	M	531.4	12.4	BVE	531.4	12.4	BVE	500.5	11.4	CMG	482.6	11.9	CMG				
467.5	9.5	CMG	503.4	12.0	CMG	541.4	12.5	CMG	533.4	8.7	CMG	500.5	13.4	CMG			
475.6	9.3	CMG	530.4	13.2	CMG	547.3	12.7	CMG	541.4	8.7	CMG	-----	-----	-----	-----	-----	
482.5	8.9	CMG	541.4	12.6	CMG	-----	-----	-----	547.4	8.8	CMG	0123+50					
493.4	8.3	CMG	547.3	12.7	CMG	0054+27			-----	-----	-----	RZ PER	M				
500.5	8.2	CMG	-----	-----	-----	-----	-----	-----	-----	-----	-----	467.6	12.7	CMG			
505.4	8.2	CMG	0031+79		W PSC	M		0109+40			475.6	12.3	CMG				
531.5	8.7	BVE	Y CEP	M	470.5	12.0	CMG	U AND	M		482.5	11.8	CMG				
533.3	9.2	CMG	467.5	9.3	CMG	475.6	11.6	CMG	503.5	15.0	CMG	493.4	11.2	CMG			
541.4	9.3	CMG	475.5	9.3	CMG	482.6	10.8	CMG	-----	-----	-----	500.5	11.0	CMG			
547.4	9.7	CMG	482.5	9.8	CMG	500.5	10.6	CMG	0110+41A			505.4	10.6	CMG			
548.4	9.8	BVE	489.4	9.9	CMG	533.4	12.4	CMG	UZ AND	M		533.4	10.3	CMG			
-----	-----	-----	500.4	10.8	CMG	541.4	13.5	CMG	470.5	12.5	CMG	541.4	10.3	CMG			
0017+55		505.4	11.3	CMG	547.4	13.7	CMG	500.5	13.4	CMG	547.4	10.2	CMG				
T CAS	M	505.4	11.3	CMG	-----	-----	-----	533.3	14.3	CMG	-----	-----	-----	-----	-----	-----	-----
467.5	8.9	CMG	519.4	12.2	GGU	0058+40			0110+55A			0125+02					
475.5	9.0	CMG	530.4	12.8	GGU	RX AND	UGZ		VZ CAS	M		R PSC	M				
482.5	9.0	CMG	530.4	12.7	CMG	467.447	11.0	BMU	467.5	10.8	CMG	475.6	8.6	CMG			
490.4	9.0	CMG	541.4	13.0	CMG	467.481	11.0	CMG	475.5	10.7	CMG	482.6	8.4	CMG			
499.4	9.0	CMG	547.3	13.4	CMG	470.501	11.7	CMG	475.5	10.7	CMG	500.5	8.4	CMG			
505.4	9.0	CMG	-----	-----	-----	471.435	11.8	BMU	482.5	10.7	CMG	-----	-----	-----	-----	-----	-----
522.4	8.8	GGU	0040+47		471.438	11.9	VDE	482.5	10.7	CMG	0127+46						
530.4	8.9	CMG	U CAS	M	471.495	11.7	CMG	490.4	10.6	CMG	SX AND	M					
531.4	8.5	GGU	467.5	13.8	CMG	475.525	13.8	CMG	499.4	10.7	CMG	470.5	11.1	CMG			
531.4	9.5	BVE	503.4	15.0	CMG	482.504	11.0	CMG	505.4	10.7	CMG	475.6	11.0	CMG			
541.4	8.8	CMG	547.3	13.7	CMG	483.427	11.0	CMG	530.4	11.7	CMG	482.5	10.8	CMG			
547.3	8.9	CMG	-----	-----	-----	484.417	10.8	BMU	531.4	11.8	GGU	493.4	10.8	CMG			
-----	-----	-----	0041+32		484.420	11.0	VDE	541.4	12.5	CMG	500.5	10.4	CMG				
0018+38		470.5	9.9	CMG	484.431	10.9	CMG	547.3	12.7	CMG	505.4	10.5	CMG				
R AND	M	475.6	9.5	CMG	485.399	10.7	BMU	-----	-----	-----	533.3	9.8	CMG				
-----	-----	-----	-----	-----	485.400	11.4	VDE	-----	-----	-----	-----	-----	-----	-----	-----	-----	-----

541.4	10.1	CMG	475.6	10.6	CMG	541.4	10.9	CMG	467.4	9.8	CMG	490.4	12.5	CMG
547.4	9.8	CMG	482.6	10.2	CMG	547.4	10.4	CMG	475.4	9.7	CMG	500.4	12.9	CMG
-----	-----	-----	500.5	8.6	CMG	-----	-----	-----	490.4	10.1	CMG	505.4	13.0	CMG
0132+38			531.5	8.6	BVE	0221+50			500.4	10.7	CMG	530.3	12.3	CMG
RU AND	SRA		541.4	8.8	CMG	RR PER		M	505.4	10.8	CMG	541.3	11.2	CMG
470.5	11.4	CMG	547.4	9.0	CMG	470.5	11.3	CMG	530.3	11.7	CMG	547.3	11.0	CMG
483.4	11.9	CMG	-----	-----	-----	475.6	11.5	CMG	541.3	11.9	CMG	-----	-----	-----
500.5	11.9	CMG	0211+43A			482.6	11.7	CMG	547.3	12.2	CMG	0446+17		
531.5	11.7	BVE	W AND		M	493.4	11.0	CMG	-----	-----	-----	V TAU		M
533.3	11.8	CMG	482.5	14.4	CMG	500.5	12.2	CMG	0314-01			541.6	13.7	CMG
541.4	11.6	CMG	500.5	13.6	CMG	505.5	12.5	CMG	X CET		M	-----	-----	-----
547.4	11.4	CMG	531.5	12.1	BVE	533.4	13.5	CMG	541.6	12.5	CMG	0446+49		
-----	-----	-----	533.3	12.2	CMG	541.4	13.7	CMG	-----	-----	-----	AU AUR		M
0133+38			541.4	12.0	CMG	547.4	13.8	CMG	0320+43			501.5	10.7	CMG
Y AND		M	547.4	12.0	CMG	-----	-----	-----	Y PER		M	541.4	11.2	CMG
500.5	14.1	CMG	548.4	11.4	BVE	0228+55			467.6	10.3	CMG	-----	-----	-----
531.5	13.2	BVE	-----	-----	-----	DY PER		SRB	475.6	10.3	CMG	0452+56		
533.3	13.2	CMG	0212+58			471.493	13.9	CMG	482.5	10.4	CMG	TX CAM		M
541.4	12.4	CMG	T PER		SRC	471.510	13.8	BMU	500.5	10.3	CMG	501.5	10.8	CMG
547.4	11.5	CMG	471.5	8.9	CMG	471.511	14.1	VDE	530.3	10.3	BMU	541.5	11.9	CMG
-----	-----	-----	483.4	8.9	CMG	475.539	13.9	CMG	531.5	9.7	BVE	-----	-----	-----
0149+58			500.5	8.8	CMG	482.504	13.9	CMG	533.4	10.3	CMG	0500+03A		
X CAS		M	548.3	8.7	CMG	499.485	12.7	BMU	541.4	10.0	CMG	V ORI		M
467.5	10.3	CMG	-----	-----	-----	499.488	12.7	VDE	547.3	9.7	BMU	541.6	11.8	CMG
475.5	10.4	CMG	0212+81			501.406	12.7	BMU	547.4	10.0	CMG	-----	-----	-----
475.5	10.4	CMG	Z CEP		M	502.408	13.0	CMG	547.4	10.0	GGU	0509+53		
482.5	10.3	CMG	467.5	11.7	CMG	503.392	12.9	CMG	-----	-----	-----	R AUR		M
490.4	10.3	CMG	475.5	11.6	CMG	522.401	12.3	BMU	0323+35			501.5	12.0	CMG
500.4	10.6	CMG	482.5	11.5	CMG	522.402	12.3	VDE	R PER		M	530.5	9.5	BVE
505.4	10.7	CMG	489.4	11.6	CMG	530.338	12.2	BMU	475.6	8.8	CMG	541.4	9.3	CMG
530.4	11.0	CMG	500.4	11.8	CMG	530.338	12.2	VDE	482.6	8.8	CMG	-----	-----	-----
531.4	11.0	GGU	505.4	12.2	CMG	533.355	12.4	CMG	500.5	8.7	CMG	0515+32		
541.4	11.3	CMG	519.4	12.2	GGU	541.365	12.2	CMG	530.5	10.2	BVE	UV AUR		M
547.3	11.4	CMG	530.4	13.1	GGU	547.322	11.8	BMU	541.4	10.9	CMG	501.6	9.1	CMG
-----	-----	-----	530.4	12.9	CMG	547.323	11.8	VDE	547.4	12.1	CMG	541.6	9.3	CMG
0152+54			541.4	13.5	CMG	-----	-----	-----	-----	-----	-----	-----	-----	-----
U PER		M	547.3	13.8	CMG	0228-13			0324+43			0519+50		
467.5	9.6	CMG	-----	-----	-----	U CET		M	GK PER	NA+XP		AC AUR		M
475.6	9.9	CMG	0214-03			541.6	10.1	CMG	471.526	13.2	CMG	541.4	10.1	CMG
482.5	10.0	CMG	omi CET		M	-----	-----	-----	500.465	13.3	CMG	-----	-----	-----
493.4	10.3	CMG	499.5	3.1	BMU	0229+80			530.340	13.0	BMU	0520+36		
505.4	10.7	CMG	499.6	3.6	VDE	RR CEP		M	530.342	12.9	VDE	W AUR		M
531.5	10.9	BVE	501.6	3.1	CMG	467.5	10.7	CMG	531.524	13.2	BVE	501.5	11.3	CMG
533.4	10.9	CMG	530.4	3.6	BMU	475.5	10.7	CMG	541.360	13.2	CMG	541.6	13.1	CMG
541.4	11.1	CMG	531.5	3.8	BVE	482.5	11.1	CMG	547.325	13.2	BMU	-----	-----	-----
547.4	11.1	CMG	531.6	3.7	CMG	489.4	11.7	CMG	547.328	12.9	VDE	0524-04A		
-----	-----	-----	541.7	4.1	CMG	500.4	11.9	CMG	547.417	13.1	GGU	S ORI		M
0154+57			547.4	4.3	CMG	505.4	12.1	CMG	-----	-----	-----	541.6	13.1	CMG
V666 CAS		M	-----	-----	-----	519.4	12.4	GGU	0333+62A			-----	-----	-----
467.5	12.1	CMG	0215+58			530.4	12.4	GGU	U CAM	SRB		0530+68		
475.6	12.3	CMG	S PER		SRC	530.4	12.6	CMG	467.4	8.4	CMG	S CAM		SRA
482.5	11.9	CMG	467.5	11.2	CMG	541.4	13.0	CMG	470.5	8.5	CMG	467.4	8.9	CMG
490.4	12.3	CMG	471.5	11.3	BMU	547.3	13.0	CMG	483.5	8.4	CMG	475.4	8.9	CMG
500.4	12.9	CMG	471.5	11.3	VDE	-----	-----	-----	503.4	8.4	CMG	482.4	8.8	CMG
530.4	13.4	CMG	475.6	11.3	CMG	0231+33			547.3	8.4	CMG	490.4	8.7	CMG
541.4	13.4	CMG	482.5	11.3	CMG	R TRI		M	0419+16			500.4	8.7	CMG
547.3	13.3	CMG	491.4	11.3	BMU	467.5	8.3	CMG	VX TAU		M	505.4	8.7	CMG
-----	-----	-----	493.4	11.3	CMG	475.6	8.5	CMG	541.6	10.2	CMG	530.3	8.7	CMG
0159+12			501.4	11.4	BMU	482.6	8.9	CMG	-----	-----	-----	541.3	8.7	CMG
S ARI		M	505.4	11.5	CMG	500.5	9.6	CMG	0430+65			547.3	8.5	CMG
531.5	11.1	BVE	522.4	11.3	BMU	505.5	9.8	CMG	T CAM		M	-----	-----	-----
-----	-----	-----	522.4	11.3	VDE	531.5	10.5	BVE	467.4	9.6	CMG	0533+26		
0202+27			531.5	11.2	BVE	533.4	10.9	CMG	475.4	9.6	CMG	RR TAU		INSA
Z TRI		M	533.4	11.5	CMG	541.4	11.1	CMG	482.4	10.2	CMG	541.606	10.9	CMG
482.6	10.3	CMG	541.4	11.6	CMG	547.4	11.1	CMG	490.4	10.5	CMG	-----	-----	-----
500.5	10.0	CMG	547.3	11.4	BMU	-----	-----	-----	500.4	10.9	CMG	0533+28		
505.5	9.9	CMG	547.3	11.2	VDE	0242+17			505.4	10.9	CMG	AW AUR		M
533.4	10.4	CMG	547.4	11.6	CMG	T ARI		SRA	530.3	12.1	CMG	541.6	12.5	CMG
541.4	10.1	CMG	-----	-----	-----	500.5	8.6	CMG	541.3	12.5	CMG	-----	-----	-----
547.4	10.6	CMG	0220-00			531.5	8.7	BVE	547.3	12.6	CMG	0533+37		
-----	-----	-----	R CET		M	541.5	8.4	CMG	-----	-----	-----	RU AUR		M
0204+48			531.5	11.5	BVE	547.4	8.4	CMG	0432+08			501.6	10.2	CMG
RV AND	SRA		541.7	10.8	CMG	-----	-----	-----	RX TAU		M	541.6	11.6	CMG
483.4	10.0	CMG	-----	-----	-----	0305+14			541.6	12.2	CMG	-----	-----	-----
500.5	10.2	CMG	0221+32A			U ARI		M	-----	-----	-----	0535+31		
533.3	10.2	CMG	S TRI		M	501.6	11.0	CMG	0432+74			U AUR		M
548.3	10.1	CMG	471.5	10.9	CMG	531.5	9.1	BVE	X CAM		M	501.6	12.9	CMG
-----	-----	-----	482.6	10.9	CMG	541.7	8.7	CMG	467.4	10.0	CMG	541.6	9.2	CMG
0210+24			500.5	11.1	CMG	-----	-----	-----	475.4	11.1	CMG	-----	-----	-----
R ARI		M	505.5	11.0	CMG	0311+70			482.4	11.8	CMG	0543+19		
467.5	10.9	CMG	533.4	10.9	CMG	V667 CAS		M	489.4	12.2	BMU	SU TAU		RCB

541.611	10.1	CMG	0634+44A	471.470	13.4	CMG	475.4	8.7	CMG	RV DRA	M			
-----	-----	-----	AA AUR	M	471.499	13.3	BMU	482.4	8.0	CMG	470.4	13.4	CMG	
0546+15A			501.5	11.5	CMG	471.501	13.3	VDE	489.4	7.3	BMU	475.4	13.1	CMG
Z TAU	M		541.4	9.8	CMG	475.440	13.3	CMG	489.4	7.6	CMG	482.4	12.7	CMG
541.6	13.5	CMG	-----	-----	-----	482.428	13.0	CMG	499.4	7.3	CMG	489.4	12.4	CMG
-----	-----	-----	0635+58			484.412	13.0	BMU	505.3	7.2	CMG	499.4	11.2	CMG
0546+15C			S LYN	M		484.414	13.3	VDE	519.4	7.3	GGU	505.4	11.0	CMG
RU TAU	M		501.6	14.1	CMG	484.438	12.9	CMG	523.4	7.7	BMU	530.4	10.6	CMG
541.6	12.3	CMG	541.5	14.1	CMG	485.390	10.9	CMG	523.4	7.5	VDE	541.3	10.8	CMG
-----	-----	-----	-----	-----	-----	489.375	11.6	CMG	529.4	7.5	BMU	547.3	10.7	CMG
0549+20A			0640+18			489.399	11.2	BMU	530.3	7.6	CMG	-----	-----	-----
U ORI	M		RT GEM	M		490.434	11.7	CMG	530.3	7.8	GGU	1234+59		
541.6	11.5	CMG	541.6	13.6	CMG	491.414	12.0	BMU	541.3	8.1	CMG	RS UMA	M	
-----	-----	-----	-----	-----	-----	492.369	12.1	CMG	541.3	7.9	GGU	467.4	12.7	CMG
0549+74			0640+30			499.396	13.4	CMG	542.3	8.3	BVE	475.4	12.4	CMG
V CAM	M		X GEM	M		499.558	13.5	BMU	547.3	8.4	BMU	482.4	11.6	CMG
503.4	14.9	CMG	541.6	9.9	CMG	499.558	13.5	VDE	547.3	8.3	CMG	489.4	11.1	BMU
-----	-----	-----	-----	-----	-----	500.401	13.4	CMG	-----	-----	-----	489.4	11.1	CMG
0553+53			0645+16			501.403	13.4	BMU	1048+72			499.4	9.9	CMG
Z AUR	SRD		IT GEM	M		501.603	13.3	CMG	VX UMA	M		505.3	9.4	CMG
541.4	10.9	CMG	541.6	11.1	CMG	502.645	13.3	CMG	471.5	13.7	CMG	519.4	9.1	GGU
-----	-----	-----	-----	-----	-----	503.357	12.7	CMG	484.4	12.1	CMG	523.4	8.9	BMU
0554+39			0653+55			503.566	12.0	BMU	500.4	11.4	CMG	523.4	8.6	VDE
AZ AUR	M		R LYN	M		504.419	11.0	CMG	530.3	10.8	CMG	529.4	8.8	BMU
541.6	12.0	CMG	501.6	11.6	CMG	504.485	10.8	BMU	541.3	10.5	CMG	529.4	8.9	VDE
-----	-----	-----	541.5	12.5	CMG	504.488	10.7	VDE	547.3	10.6	CMG	530.3	8.9	CMG
0557+16			0701+22A			505.370	11.0	CMG	-----	-----	-----	530.3	8.8	GGU
RR ORI	M		R GEM	M		506.390	11.0	CMG	1151+58			541.3	8.7	CMG
541.6	11.5	CMG	541.6	7.6	CMG	522.392	13.2	BMU	Z UMA	SRB		541.3	8.7	GGU
-----	-----	-----	-----	-----	-----	522.395	13.3	VDE	467.4	7.8	CMG	542.3	8.7	BVE
0604+50			0703+10			524.358	13.0	BMU	475.4	7.8	CMG	547.3	8.7	BMU
X AUR	M		R CMI	M		524.361	13.1	VDE	482.4	7.6	CMG	547.3	8.8	CMG
501.5	10.5	CMG	541.6	9.8	CMG	526.420	13.0	BMU	489.4	7.5	BMU	547.3	9.0	VDE
530.5	9.0	BVE	-----	-----	-----	529.338	12.9	BMU	490.4	7.4	CMG	547.4	8.7	GGU
541.4	8.4	CMG	0706+07			529.340	13.1	VDE	499.4	7.2	CMG	-----	-----	-----
-----	-----	-----	WX CMI	M		530.335	13.1	CMG	499.5	7.3	BMU	1239+61		
0607+27			541.6	12.6	CMG	530.434	13.2	BMU	503.6	7.6	VDE	S UMA	M	
SU GEM	RVB		-----	-----	-----	530.434	13.1	VDE	505.4	7.2	CMG	467.4	8.3	CMG
541.6	11.0	CMG	0707+14			532.419	10.8	BMU	519.4	7.4	BMU	475.4	8.3	CMG
-----	-----	-----	VX GEM	M		533.378	10.9	CMG	519.4	7.6	VDE	482.4	8.2	CMG
0612+75			541.6	10.8	CMG	533.419	10.7	VDE	523.4	7.7	BMU	489.4	8.2	BMU
W CAM	M		-----	-----	-----	541.311	12.4	BMU	529.3	7.6	BMU	489.4	8.2	CMG
467.4	10.3	CMG	0717+13			541.312	12.9	VDE	529.4	7.8	VDE	499.4	8.2	CMG
475.4	10.1	CMG	V GEM	M		541.408	12.5	CMG	530.3	7.6	CMG	499.4	7.8	VDE
482.4	10.2	CMG	541.6	11.7	CMG	547.297	13.4	BMU	541.3	7.7	CMG	505.3	8.2	CMG
490.4	10.2	CMG	-----	-----	-----	547.299	13.3	VDE	542.3	8.2	BVE	519.4	8.1	GGU
500.4	10.2	CMG	0721+41			547.410	13.6	CMG	547.3	8.2	BMU	519.4	8.1	VDE
505.4	10.5	CMG	VX AUR	M		548.291	13.5	CMG	548.3	7.8	CMG	522.4	8.0	VDE
530.3	13.0	CMG	541.6	9.1	CMG	-----	-----	-----	-----	-----	-----	523.4	8.0	BMU
547.3	14.0	CMG	-----	-----	-----	0816+17			1225+32			529.3	8.0	BMU
-----	-----	-----	0727+08			V CNC	M		T CVN	M:		529.3	7.9	VDE
0616+47			S CMI	M		541.7	9.6	CMG	467.4	11.1	CMG	530.3	8.2	CMG
V AUR	M		541.6	8.0	CMG	-----	-----	-----	482.4	11.2	CMG	530.3	8.3	GGU
501.5	11.2	CMG	-----	-----	-----	0816+33			489.4	11.0	CMG	541.3	8.5	CMG
541.4	10.6	CMG	0728+11			T LYN	M		499.4	11.1	CMG	541.3	8.3	GGU
-----	-----	-----	T CMI	M		541.6	10.5	CMG	-----	-----	-----	542.3	8.3	BVE
0617-02			541.6	12.8	CMG	-----	-----	-----	1231+60			547.3	8.3	BMU
V MON	M		-----	-----	-----	0819+35			T UMA	M		547.3	8.3	CMG
541.6	12.0	CMG	0735+08			X LYN	M		467.4	11.9	CMG	547.3	8.1	VDE
-----	-----	-----	U CMI	M		541.6	12.0	CMG	475.4	11.4	CMG	547.4	8.4	GGU
0625+64			541.6	10.3	CMG	-----	-----	-----	482.4	10.9	CMG	-----	-----	-----
RT CAM	M		-----	-----	-----	0830+19			489.4	10.5	BMU	1242+38		
501.6	12.0	CMG	0737+23			U CNC	M		489.4	10.5	CMG	U CVN	M	
541.5	10.7	CMG	S GEM	M		541.7	10.7	CMG	499.4	9.3	CMG	467.4	12.6	CMG
-----	-----	-----	541.6	13.7	CMG	-----	-----	-----	505.3	8.9	CMG	482.4	11.3	CMG
0625+74			-----	-----	-----	0931+78			519.4	7.5	GGU	489.4	10.5	CMG
SU CAM	M		0743+23			Y DRA	M		523.4	7.2	BMU	503.4	9.2	CMG
482.4	12.4	CMG	T GEM	M		467.5	14.4	CMG	523.4	7.2	VDE	-----	-----	-----
490.4	11.9	CMG	541.6	13.1	CMG	482.4	14.6	CMG	529.3	6.9	BMU	1322+62		
500.4	11.2	CMG	-----	-----	-----	499.4	14.5	CMG	529.4	7.5	VDE	RR UMA	M	
505.4	10.6	CMG	0749+22			530.4	14.6	CMG	530.3	7.5	CMG	467.5	11.2	CMG
530.3	10.1	CMG	U GEM	UGSS+E		-----	-----	-----	530.3	7.4	GGU	475.4	11.8	CMG
541.3	10.2	CMG	541.648	14.1	CMG	1009+73			541.3	7.3	CMG	482.4	12.1	CMG
547.3	10.2	CMG	-----	-----	-----	DR DRA	M		541.3	7.4	GGU	502.4	13.4	CMG
-----	-----	-----	0814+73			470.5	12.8	CMG	542.3	6.9	BVE	-----	-----	-----
0631+59			Z CAM	UGZ		500.4	12.5	CMG	547.3	7.0	BMU	1332+73		
U LYN	M		466.444	13.3	BMU	533.4	12.7	CMG	547.3	7.3	CMG	T UMI	M	
501.6	10.2	CMG	467.400	13.3	CMG	-----	-----	-----	547.3	7.5	VDE	467.4	10.8	CMG
541.5	11.0	CMG	467.474	13.3	BMU	1037+69			547.4	7.7	GGU	475.4	10.8	CMG
-----	-----	-----	470.448	13.4	CMG	R UMA	M		-----	-----	-----	482.4	11.0	CMG
						467.4	10.1	CMG	1233+66			489.5	11.3	CMG

Variabilia 71 : 4

499.4	11.4	CMG	-----	475.5	8.7	CMG	548.288	6.2	BVE	1558-23
505.3	11.2	CMG	1432+27	482.4	8.4	CMG	-----			RZ SCO M
519.4	11.8	GGU	R BOO M	489.4	8.6	CMG	1544+28B			458.7 9.4 BVE
530.3	12.0	CMG	467.4 12.7 CMG	499.4	8.8	CMG	TT CRB SRB			-----
530.4	12.0	GGU	475.5 12.7 CMG	505.4	8.9	CMG	458.7 11.6 BVE			1600-21
541.3	12.2	CMG	482.4 13.1 CMG	530.3	10.0	CMG	530.3 11.3 BVE			Z SCO M
541.3	11.9	GGU	489.4 12.7 CMG	541.3	10.4	CMG	548.3 11.9 BVE			458.7 13.0 BVE
547.3	12.2	CMG	499.4 12.4 CMG	547.3	10.9	CMG	-----			-----
547.4	12.1	GGU	530.3 10.4 BVE	-----			1545+36			1601+18
-----			530.3 10.2 CMG	1517+31			X CRB M			R HER M
1344+34			541.3 9.6 CMG	S CRB M			467.4 13.1 CMG			467.5 12.5 CMG
RT CVN M			542.3 9.3 BVE	458.7 11.8 BVE			475.5 13.3 CMG			475.5 12.8 CMG
467.4 11.4 CMG			547.3 9.2 CMG	467.4 11.8 CMG			482.4 13.5 CMG			482.4 13.1 CMG
482.4 12.4 CMG			-----	475.5 11.4 CMG			489.4 13.6 CMG			489.4 13.4 CMG
-----			1344+40	482.4 10.9 CMG			499.4 13.7 CMG			499.4 13.6 CMG
			1443+39	489.4 10.4 CMG			530.3 13.8 CMG			530.3 14.7 CMG
R CVN M			RR BOO M	499.4 10.4 CMG			541.3 13.0 CMG			547.3 14.8 CMG
467.4 7.8 CMG			467.4 11.4 CMG	505.4 10.2 CMG			547.3 12.6 CMG			-----
489.4 8.8 CMG			475.4 12.3 CMG	530.3 8.1 BVE			-----			1601+67
499.4 9.0 CMG			482.4 12.4 CMG	530.3 8.3 CMG			1546+15			AG DRA ZAND
-----			489.4 13.2 CMG	541.3 7.5 CMG			R SER M			482.431 10.0 CMG
1415+67			499.4 13.7 CMG	547.3 7.3 CMG			458.7 13.4 BVE			489.407 10.0 CMG
U UMI M			530.3 13.5 CMG	548.3 6.9 BVE			467.4 13.0 CMG			502.369 10.0 CMG
467.4 9.3 CMG			541.3 13.7 CMG	-----			475.5 13.4 CMG			519.380 10.2 GGU
475.4 9.2 CMG			542.3 13.5 BVE	1533+78A			482.4 13.7 CMG			530.378 10.0 GGU
482.4 8.9 CMG			547.3 12.9 CMG	S UMI M			489.4 13.6 CMG			541.325 10.0 GGU
489.4 8.7 CMG			-----	467.4 9.3 CMG			499.4 13.6 CMG			541.422 9.9 CMG
499.4 8.5 CMG			1510+83	475.4 9.8 CMG			530.3 12.5 CMG			547.385 9.8 GGU
505.3 8.8 CMG			Z UMI RCB	482.4 10.2 CMG			530.4 12.3 BVE			548.279 9.9 CMG
519.4 9.1 GGU			466.441 11.1 BMU	489.4 10.2 CMG			541.3 12.0 CMG			-----
530.3 8.6 CMG			467.438 11.2 CMG	499.4 10.4 CMG			547.3 11.6 CMG			1602+10
530.4 8.8 GGU			471.528 11.2 CMG	505.3 10.5 CMG			-----			U SER M
530.4 8.8 BVE			482.423 11.1 CMG	519.4 11.5 GGU			1546+39			458.7 10.9 BVE
541.3 8.6 CMG			484.415 11.3 BMU	530.3 11.3 CMG			V CRB M			467.4 9.8 CMG
541.3 8.8 GGU			484.415 11.3 VDE	530.4 11.7 GGU			458.7 9.3 BVE			475.5 9.6 CMG
542.3 9.2 BVE			489.403 11.6 BMU	530.4 11.7 BVE			467.4 9.7 CMG			482.4 9.0 CMG
547.4 9.1 GGU			489.458 11.6 CMG	541.3 11.7 CMG			475.5 9.8 CMG			489.4 8.4 CMG
-----			491.417 11.7 BMU	541.3 12.1 GGU			482.4 9.9 CMG			499.4 8.1 CMG
1419+54			493.435 11.6 CMG	542.3 11.7 BVE			499.4 10.2 CMG			503.4 8.2 CMG
S BOO M			499.434 11.5 CMG	547.3 11.8 CMG			505.4 10.2 CMG			530.3 9.1 CMG
467.4 13.5 CMG			499.503 11.6 BVE	547.4 12.2 GGU			530.3 10.4 BVE			547.3 10.0 CMG
475.5 13.4 CMG			499.506 11.6 BMU	-----			530.3 10.9 CMG			-----
482.4 13.8 CMG			501.402 11.5 BMU	1544+28A			541.3 11.2 CMG			1602-21A
530.3 11.8 BVE			502.361 11.4 CMG	R CRB RCB			547.3 11.2 CMG			X SCO M
530.3 11.8 CMG			503.565 11.5 BMU	458.669 6.0 BVE			548.3 11.2 BVE			458.7 10.5 BVE
531.3 11.3 GGU			506.391 11.3 CMG	466.428 5.9 BMU			-----			-----
541.3 10.9 CMG			519.370 11.6 GGU	467.435 5.9 CMG			1552+29			1606+25
541.3 11.2 GGU			522.367 11.6 GGU	471.465 5.8 VDE			Z CRB M			RU HER M
542.3 11.3 BVE			522.394 11.2 BMU	475.462 5.9 CMG			482.4 13.0 CMG			467.5 12.9 CMG
547.3 10.6 CMG			522.394 11.2 VDE	482.408 5.9 CMG			489.4 12.8 CMG			475.5 13.1 CMG
547.4 10.9 GGU			526.422 11.3 BMU	484.398 5.8 VDE			499.4 12.3 CMG			482.4 13.2 CMG
-----			530.326 11.3 CMG	484.403 5.9 BMU			505.4 11.9 CMG			489.4 13.4 CMG
1425+39			530.336 11.3 BMU	489.390 5.9 BMU			530.3 9.7 CMG			499.4 13.3 CMG
V BOO SRA			530.336 11.2 VDE	489.399 5.9 CMG			541.3 9.4 CMG			530.3 13.9 CMG
467.4 9.3 CMG			530.365 11.4 GGU	499.381 6.0 CMG			547.3 9.7 CMG			541.3 13.8 CMG
475.4 8.9 CMG			531.322 11.4 GGU	499.388 5.9 VDE			-----			547.3 13.9 CMG
482.4 8.7 CMG			541.310 11.2 BMU	499.476 5.9 BMU			1555+26			-----
489.4 8.2 CMG			541.310 11.2 VDE	504.485 5.7 VDE			T CRB NR			1607+10
499.4 8.2 CMG			541.317 11.3 GGU	504.486 5.9 BMU			466.431 10.5 BMU			DN HER M
505.3 8.1 CMG			541.335 11.3 CMG	505.358 5.9 CMG			467.435 10.1 CMG			467.4 11.1 CMG
530.3 8.7 BVE			547.273 11.3 CMG	519.362 5.7 VDE			475.462 10.1 CMG			475.5 11.3 CMG
542.3 8.6 BVE			547.295 11.3 BMU	519.373 5.9 BMU			482.408 10.2 CMG			482.4 11.6 CMG
547.3 8.6 CMG			547.295 11.2 VDE	519.388 6.1 GGU			484.424 10.3 BMU			489.4 12.0 CMG
-----			547.376 11.2 GGU	522.366 6.0 GGU			484.424 10.3 VDE			499.4 12.8 CMG
1425+84			-----	522.378 5.8 VDE			489.392 10.2 BMU			-----
R CAM M			1513+36	523.365 6.0 BMU			489.400 10.0 CMG			1611+38
467.4 12.9 CMG			RT BOO M	529.341 5.7 VDE			500.417 10.2 CMG			W CRB M
475.4 12.9 CMG			467.4 11.8 CMG	529.346 6.0 BMU			501.394 10.2 BMU			467.4 13.7 CMG
482.4 13.1 CMG			475.5 12.0 CMG	530.312 5.9 CMG			505.358 10.1 CMG			475.5 13.2 CMG
489.4 12.5 BMU			482.4 12.3 CMG	530.332 6.2 BVE			522.395 10.4 BMU			482.4 12.7 CMG
489.5 12.9 CMG			489.4 12.2 CMG	530.343 6.0 GGU			522.397 10.5 VDE			489.4 12.1 CMG
499.4 12.8 CMG			499.4 12.4 CMG	531.321 6.1 GGU			526.415 10.3 BMU			499.4 11.4 CMG
505.4 12.5 CMG			505.3 12.3 CMG	541.306 5.9 BMU			529.360 10.4 BMU			505.4 11.6 CMG
519.4 11.7 GGU			530.3 12.2 BVE	541.308 5.9 CMG			529.362 10.4 VDE			530.3 9.2 CMG
530.3 10.4 CMG			530.3 12.6 CMG	541.309 5.7 VDE			530.312 10.4 CMG			541.3 9.0 CMG
530.4 10.8 GGU			541.3 12.8 CMG	541.314 6.0 GGU			541.308 10.3 CMG			-----
541.3 9.7 CMG			547.3 12.6 CMG	542.333 6.0 BVE			547.299 10.4 BMU			1611-22A
541.3 9.7 GGU			-----	547.273 5.7 VDE			547.300 10.4 VDE			R SCO M
547.3 9.5 CMG			1517+14	547.298 5.8 BMU			547.302 10.2 CMG			458.7 11.9 BVE
547.4 9.7 GGU			S SER M	547.302 5.8 CMG			-----			-----
-----			467.4 8.8 CMG	547.374 6.0 GGU			-----			-----

1611-22B			541.3	9.4	GGU	489.4	11.8	CMG	1714+01			1731-16		
S SCO	M		547.4	9.4	GGU	499.4	12.7	CMG	Z OPH	M		V2540 OPH	N	
458.7	10.3	BVE	-----	-----	-----	541.3	13.0	CMG	467.4	8.8	CMG	471.444	11.1	BMU
1613+26			1632+66			547.3	12.7	CMG	475.5	8.9	CMG	-----	-----	-----
NP HER	M		R DRA	M		-----	-----	-----	482.4	9.1	CMG	1740+21		
467.5	11.4	CMG	467.5	9.7	CMG	1656+31			489.4	9.1	CMG	CF HER	M	
475.5	12.4	CMG	475.4	10.0	CMG	RV HER	M		499.4	9.4	CMG	467.5	8.9	CMG
482.4	12.4	CMG	482.4	10.5	CMG	470.5	14.6	CMG	505.4	9.1	CMG	475.5	9.2	CMG
489.4	12.4	CMG	489.4	11.0	CMG	484.4	14.9	CMG	530.3	10.6	BVE	482.5	9.1	CMG
499.4	12.5	CMG	499.4	11.9	CMG	499.4	14.9	CMG	530.3	9.6	CMG	499.4	10.0	CMG
530.3	12.4	CMG	505.4	12.0	CMG	530.4	12.5	CMG	541.3	10.6	CMG	505.4	10.1	CMG
541.3	12.4	CMG	519.4	12.2	GGU	541.3	11.5	CMG	547.3	10.8	CMG	530.4	11.6	CMG
547.3	12.4	CMG	530.4	12.6	GGU	547.3	11.0	CMG	548.3	11.3	BVE	541.3	11.9	CMG
			530.4	12.7	BVE	-----	-----	-----	-----	-----	-----	547.3	12.4	CMG
			530.4	12.4	CMG	1657+22			1717+07			-----	-----	-----
			541.3	12.4	GGU	SY HER	M		UZ OPH	RVA		1744+22		
1621+19			541.4	12.4	CMG	458.7	10.0	BVE	467.444	10.8	CMG	SU HER	M	
U HER	M		542.3	12.7	BVE	467.5	9.5	CMG	475.491	10.6	CMG	467.5	14.3	CMG
458.7	10.8	BVE	547.3	12.6	CMG	475.5	8.7	CMG	482.419	10.5	CMG	475.5	14.4	CMG
467.5	11.1	BMU	547.4	12.7	GGU	482.5	8.3	CMG	489.375	10.6	CMG	482.5	14.3	CMG
467.5	11.1	CMG	-----	-----	-----	489.4	8.3	CMG	499.361	11.0	CMG	499.4	14.0	CMG
475.5	11.1	CMG	1634+14			499.4	8.5	CMG	505.370	12.3	CMG	530.4	12.7	CMG
482.4	11.2	CMG	AS HER	M		505.4	8.9	CMG	530.317	10.9	CMG	541.3	12.4	CMG
489.4	11.3	CMG	467.5	12.1	CMG	529.4	11.6	BMU	541.299	10.4	CMG	547.3	12.4	CMG
499.4	11.5	CMG	475.5	11.0	CMG	529.4	11.8	VDE	547.288	10.6	CMG	-----	-----	-----
505.4	11.6	CMG	482.4	10.9	CMG	530.3	12.0	CMG	-----	-----	-----	1744-06		
530.3	12.1	CMG	489.4	10.3	CMG	530.4	11.9	BVE	1717+23			RS OPH	NR	
541.3	12.1	CMG	499.4	9.8	CMG	541.3	12.5	CMG	RS HER	M		466.432	11.7	BMU
547.3	12.2	CMG	505.4	8.8	CMG	547.3	12.8	CMG	458.7	10.6	BVE	467.449	11.4	CMG
548.3	12.6	BVE	530.3	8.4	CMG	548.3	13.2	BVE	467.5	11.4	CMG	471.438	11.6	BMU
			541.3	8.4	CMG	-----	-----	-----	475.5	12.3	CMG	471.496	11.4	CMG
			547.3	8.6	CMG	1657+52			482.5	12.5	CMG	475.491	11.6	CMG
1623-19			-----	-----	-----	WZ DRA	M		489.4	12.5	CMG	482.419	11.6	CMG
Y SCO	M		1640+12			467.5	11.5	CMG	499.4	13.0	CMG	483.430	11.5	CMG
458.7	12.0	BVE	UV HER	M		482.4	10.9	CMG	505.4	13.0	CMG	484.421	11.7	BMU
			471.5	14.6	CMG	489.4	10.5	CMG	530.3	12.3	CMG	484.422	11.6	VDE
1626+23			489.4	14.7	CMG	499.4	9.5	CMG	530.4	11.8	BVE	484.448	11.6	CMG
DO HER	M		-----	-----	-----	505.4	9.3	CMG	541.3	11.1	CMG	485.393	11.6	BMU
471.5	12.6	CMG	1640+25			530.4	9.5	CMG	547.3	11.1	CMG	485.396	11.7	VDE
482.5	11.7	CMG	AH HER	UGZ		541.4	9.6	CMG	548.3	11.1	BVE	489.393	11.6	BMU
489.4	10.8	CMG	467.496	13.5	CMG	547.3	9.7	CMG	-----	-----	-----	489.399	11.5	CMG
499.4	10.7	CMG	471.476	12.5	CMG	-----	-----	-----	1719+04A			491.399	11.2	BMU
505.4	11.0	CMG	475.499	13.1	CMG	1702+17			V759 OPH	SR		493.404	11.5	CMG
530.4	11.5	CMG	482.461	11.6	CMG	VY HER	M		467.4	11.7	CMG	500.418	11.3	CMG
541.3	12.1	CMG	483.412	11.6	CMG	467.5	12.0	CMG	475.5	12.1	CMG	501.395	11.1	BMU
547.3	12.7	CMG	484.414	11.6	CMG	475.5	12.3	CMG	482.4	12.0	CMG	502.360	11.4	CMG
			485.390	11.8	CMG	482.4	12.6	CMG	489.4	11.9	CMG	503.358	11.2	CMG
1628+07A			489.426	11.7	CMG	489.4	12.5	CMG	499.4	12.0	CMG	530.317	11.5	CMG
SS HER	M		499.416	12.1	CMG	499.4	13.2	CMG	530.3	12.1	CMG	530.352	11.9	BVE
467.5	10.7	CMG	502.362	12.3	CMG	530.3	14.1	CMG	541.3	12.1	CMG	541.301	11.4	CMG
475.5	9.6	CMG	503.360	12.6	CMG	-----	-----	-----	547.3	12.2	CMG	541.316	11.2	BMU
482.4	9.5	CMG	530.348	12.3	CMG	1702-15			-----	-----	-----	541.318	11.2	VDE
489.4	9.3	CMG	541.318	11.6	CMG	R OPH	M		1722+04			547.286	11.4	CMG
499.4	9.4	CMG	547.305	11.5	CMG	467.4	8.7	CMG	VW OPH	M		547.301	11.3	BMU
505.4	9.8	CMG	548.278	11.6	CMG	482.4	8.1	CMG	471.5	14.3	CMG	547.301	11.1	VDE
530.3	13.0	CMG	-----	-----	-----	489.4	8.0	CMG	541.3	10.8	CMG	548.306	11.4	BVE
541.3	13.1	CMG	1647+05			499.4	7.9	CMG	547.3	10.8	CMG	-----	-----	-----
547.3	12.9	CMG	RX OPH	M		-----	-----	-----	-----	-----	-----	1751+03		
			467.4	13.0	CMG	1705+18			1726+18			SV OPH	M	
1628-15			482.4	13.6	CMG	BG HER	M		UZ HER	M		467.4	10.5	CMG
T OPH	M		503.4	13.9	CMG	471.5	14.6	CMG	467.5	10.3	CMG	475.5	10.4	CMG
482.4	10.7	CMG	-----	-----	-----	484.4	14.5	CMG	475.5	10.0	CMG	482.4	10.6	CMG
499.4	11.1	CMG	1647+15			499.4	13.8	CMG	482.4	9.9	CMG	489.4	10.7	CMG
			S HER	M		530.4	12.2	CMG	489.4	9.6	CMG	499.4	11.1	CMG
1631+37			458.7	8.6	BVE	541.3	11.3	CMG	499.4	9.6	CMG	505.4	11.2	CMG
W HER	M		467.5	9.1	CMG	547.3	10.9	CMG	530.3	10.3	CMG	530.3	14.0	CMG
458.7	13.4	BVE	475.5	9.2	CMG	-----	-----	-----	541.3	10.8	CMG	547.3	14.4	CMG
467.5	13.5	CMG	482.4	9.2	CMG	1706+27A			548.3	11.1	CMG	-----	-----	-----
475.5	13.6	CMG	489.4	9.7	CMG	RT HER	M		-----	-----	-----	1751+11		
482.5	13.4	CMG	499.4	9.8	CMG	467.5	14.8	CMG	1728+09A			RT OPH	M	
499.4	13.6	CMG	505.4	10.4	CMG	484.4	12.5	CMG	RU OPH	M		467.4	9.7	CMG
505.4	13.5	CMG	530.3	11.5	CMG	489.4	11.6	CMG	467.4	14.1	CMG	475.5	9.9	CMG
530.3	12.0	CMG	530.4	11.1	BVE	499.4	10.4	CMG	475.5	14.0	CMG	482.4	9.7	CMG
530.4	12.0	BVE	541.3	12.0	CMG	505.4	10.2	CMG	482.4	13.6	CMG	489.4	9.7	CMG
541.3	11.5	CMG	547.3	12.4	CMG	530.3	9.6	CMG	489.4	12.6	CMG	499.4	9.8	CMG
547.3	11.2	CMG	548.3	12.8	BVE	541.3	9.9	CMG	499.4	12.2	CMG	505.4	10.0	CMG
548.3	10.9	BVE	-----	-----	-----	547.3	9.9	CMG	505.4	11.6	CMG	530.3	10.7	CMG
			1652-02			-----	-----	-----	530.3	9.6	CMG	541.3	11.0	CMG
1631+72			SS OPH	M		-----	-----	-----	541.3	9.4	CMG	548.3	11.1	BVE
R UMI	SRA		467.4	10.6	CMG	-----	-----	-----	547.3	9.3	CMG	-----	-----	-----
519.4	9.4	GGU	482.4	12.1	CMG	-----	-----	-----	-----	-----	-----	-----	-----	-----
530.4	9.5	GGU	-----	-----	-----	-----	-----	-----	-----	-----	-----	-----	-----	-----

1754+23A			467.5	12.7	CMG	475.5	12.3	CMG	1823+06			1842-05		
FU HER	M		475.5	13.4	CMG	482.5	12.3	CMG	T SER	M		R SCT	RVA	
467.5	12.5	CMG	482.5	13.7	CMG	499.4	12.2	CMG	471.5	15.5	CMG	466.430	5.5	BMU
475.5	13.0	CMG	489.4	13.8	CMG	505.4	12.0	CMG	499.4	15.2	CMG	467.533	5.7	CMG
482.4	13.3	CMG	499.4	14.0	CMG	530.4	10.3	BVE	547.3	15.0	CMG	471.433	5.3	BMU
489.4	13.6	CMG	-----	-----	-----	530.4	10.3	CMG	-----	-----	-----	471.433	4.8	VDE
499.4	14.2	CMG	1805+18			541.3	9.9	CMG	1829+16			475.540	5.7	CMG
-----	-----	-----	XZ HER	M		542.3	9.7	BVE	DS HER	M		484.397	4.9	VDE
1754+58A			547.3	13.3	CMG	547.3	9.5	CMG	502.4	12.0	CMG	484.403	5.3	BMU
T DRA	M		-----	-----	-----	-----	-----	-----	530.4	10.2	CMG	485.380	5.7	CMG
467.5	9.1	CMG	1805+31			1813+06			548.3	10.7	CMG	489.363	5.6	CMG
475.5	9.3	CMG	T HER	M		BC OPH	M		-----	-----	-----	499.381	5.8	VDE
482.4	9.6	CMG	458.7	12.5	BVE	467.4	10.0	CMG	1831+49A			499.479	5.5	BMU
499.4	9.8	CMG	467.5	12.9	CMG	475.5	9.8	CMG	SV DRA	M		500.363	5.7	CMG
505.4	9.8	CMG	475.5	13.1	CMG	482.4	9.7	CMG	467.5	10.1	CMG	504.486	5.6	VDE
530.4	10.2	CMG	482.4	12.5	CMG	489.4	9.7	CMG	475.5	10.4	CMG	504.487	5.7	BMU
541.4	10.4	CMG	489.4	12.1	CMG	499.4	9.8	CMG	482.4	10.8	CMG	519.356	5.2	VDE
547.3	10.6	CMG	499.4	10.8	CMG	505.4	10.0	CMG	489.4	11.2	CMG	519.374	5.2	BMU
-----	-----	-----	505.4	10.3	CMG	530.3	10.5	CMG	499.4	11.7	CMG	522.377	4.7	VDE
1755+19			530.4	9.1	BVE	541.3	11.4	CMG	505.4	11.9	CMG	523.365	5.2	BMU
RY HER	M		530.4	9.2	CMG	547.3	11.6	CMG	530.4	12.9	CMG	529.340	4.9	VDE
458.7	13.0	BVE	541.3	8.5	CMG	-----	-----	-----	541.4	13.4	CMG	529.347	5.1	BMU
467.5	12.2	CMG	547.3	8.5	CMG	1817+30			547.3	13.6	CMG	530.376	5.7	CMG
475.5	11.3	CMG	548.3	8.3	BVE	TV LXR	M		-----	-----	-----	530.386	5.7	BVE
482.4	11.1	CMG	-----	-----	-----	485.4	12.3	CMG	1832+25			541.304	5.6	VDE
489.4	10.7	CMG	1805+65			492.4	12.3	CMG	RZ HER	M		541.307	5.7	BMU
499.4	9.5	CMG	W DRA	M		500.4	12.0	CMG	467.5	13.3	CMG	541.345	5.7	CMG
505.4	9.6	CMG	467.5	13.1	CMG	505.4	12.2	CMG	475.5	13.7	CMG	542.378	5.7	BVE
530.4	9.6	BVE	475.6	12.9	CMG	530.4	12.7	CMG	482.5	13.7	CMG	547.272	6.0	BMU
530.4	9.9	CMG	482.4	12.5	CMG	541.3	13.0	CMG	499.4	14.1	CMG	547.272	5.8	VDE
541.3	10.0	CMG	489.4	12.1	CMG	547.3	13.4	CMG	530.4	14.8	CMG	547.353	5.9	CMG
547.3	10.5	CMG	499.4	11.7	CMG	-----	-----	-----	-----	-----	-----	548.325	5.7	BVE
548.3	10.5	BVE	505.4	10.7	CMG	1818+28			1832+27			-----	-----	-----
-----	-----	-----	541.4	10.0	CMG	AZ HER	M		CE LXR	M		1850+32		
1755+23			547.3	10.0	CMG	467.5	10.6	CMG	470.5	14.0	CMG	RX LXR	M	
WY HER	M		-----	-----	-----	475.5	10.7	CMG	484.4	14.0	CMG	500.4	14.0	CMG
467.5	11.4	CMG	1806+66			482.5	11.2	CMG	500.4	14.0	CMG	530.4	12.3	CMG
475.5	11.5	CMG	X DRA	M		489.4	11.6	CMG	-----	-----	-----	541.3	11.8	CMG
482.5	11.4	CMG	467.5	13.7	CMG	499.4	12.1	CMG	1833+08			547.3	11.8	CMG
489.4	11.3	CMG	503.4	15.5	CMG	505.4	12.7	CMG	X OPH	M		-----	-----	-----
499.4	10.1	CMG	-----	-----	-----	530.4	14.2	CMG	467.4	6.5	CMG	1854-01		
530.4	12.7	CMG	1810+20			547.3	14.6	CMG	475.5	6.4	CMG	VX AQL	M:	
547.3	12.0	CMG	YY HER	ZAND		-----	-----	-----	482.4	6.4	CMG	467.5	10.4	CMG
-----	-----	-----	467.510	13.6	CMG	1820+39			489.4	6.6	CMG	475.5	10.6	CMG
1756+54			475.514	13.3	CMG	TW LXR	M		499.4	7.0	CMG	483.4	10.6	CMG
V DRA	M		482.452	13.3	CMG	467.5	11.3	CMG	505.4	7.3	CMG	490.4	10.7	CMG
467.5	13.1	CMG	489.423	13.3	CMG	475.5	10.8	CMG	530.3	7.8	CMG	530.4	11.8	CMG
475.5	12.7	CMG	499.416	13.4	CMG	482.5	10.0	CMG	530.4	8.0	BVE	541.3	11.7	CMG
482.4	12.4	CMG	530.351	13.3	CMG	489.5	10.1	CMG	541.3	8.0	CMG	547.4	11.7	CMG
499.4	11.6	CMG	547.309	13.3	CMG	499.4	10.2	CMG	548.3	8.0	BVE	-----	-----	-----
505.4	11.3	CMG	-----	-----	-----	505.4	10.2	CMG	-----	-----	-----	1855-22		
530.4	10.4	CMG	1810+31			530.4	10.8	CMG	1839+22			V4743 SGR	N	
541.4	10.1	CMG	TV HER	M		541.3	11.1	CMG	AE HER	M		541.297	6.5	BMU
547.3	10.3	CMG	470.5	13.6	CMG	547.3	11.4	CMG	484.4	14.4	CMG	541.300	6.3	CMG
-----	-----	-----	475.5	13.3	CMG	-----	-----	-----	-----	-----	-----	541.303	6.2	VDE
1756-25			482.4	12.4	CMG	1821+72			1841+34			542.308	7.3	BVE
V4742 SGR	N		489.4	11.4	CMG	RT DRA	M		RY LXR	M		542.32	7.0	SAQ
541.292	9.6	BMU	499.4	10.9	CMG	467.5	12.0	CMG	475.5	10.5	CMG	544.33	7.2	SAQ
541.296	9.5	VDE	505.4	9.7	CMG	475.5	12.4	CMG	482.5	9.9	CMG	547.281	7.7	BMU
-----	-----	-----	530.4	9.5	BVE	482.4	12.9	CMG	489.4	9.8	CMG	547.283	7.8	VDE
1757+18			530.4	9.5	CMG	489.4	13.3	CMG	499.4	10.0	CMG	547.300	8.0	CMG
WZ HER	M		541.3	9.5	CMG	499.4	13.5	CMG	505.4	10.1	CMG	547.32	7.7	SAQ
484.4	14.4	CMG	547.3	9.5	CMG	530.4	14.0	CMG	530.4	10.8	BVE	-----	-----	-----
502.4	14.6	CMG	548.3	9.6	BVE	541.4	14.5	CMG	530.4	10.7	CMG	1856+34		
530.4	11.8	CMG	-----	-----	-----	547.3	14.4	CMG	541.3	11.1	CMG	Z LXR	M	
541.3	11.8	CMG	1811+03			-----	-----	-----	542.3	10.7	BVE	467.5	12.3	CMG
547.3	11.8	CMG	RY OPH	M		1822+24			547.3	11.5	CMG	475.5	12.7	CMG
-----	-----	-----	467.4	12.2	CMG	SV HER	M		-----	-----	-----	482.5	13.0	CMG
1802+20A			475.5	13.0	CMG	467.5	11.7	CMG	1842+43			489.4	13.3	CMG
DE HER	SRD		482.4	13.1	CMG	475.5	11.0	CMG	RW LXR	M		-----	-----	-----
467.5	11.3	CMG	489.4	13.2	CMG	482.5	11.0	CMG	470.5	12.5	CMG	1857+37		
475.5	11.1	CMG	499.4	13.1	CMG	489.4	10.4	CMG	475.5	12.0	CMG	RT LXR	M	
482.5	10.9	CMG	530.3	11.1	BVE	499.4	9.9	CMG	482.5	11.6	CMG	467.5	11.0	CMG
489.4	10.9	CMG	530.3	11.0	CMG	505.4	9.5	CMG	489.4	11.8	CMG	475.5	11.2	CMG
499.4	11.0	CMG	541.3	10.1	CMG	530.4	10.4	CMG	500.4	11.8	CMG	482.5	11.5	CMG
530.4	11.4	CMG	547.3	9.8	CMG	541.3	11.0	CMG	505.4	11.7	CMG	489.4	12.4	CMG
541.3	11.3	CMG	548.3	9.8	BVE	547.3	11.0	CMG	530.4	12.0	CMG	499.4	12.7	CMG
547.3	11.2	CMG	-----	-----	-----	-----	-----	-----	541.3	12.2	CMG	505.4	13.5	CMG
-----	-----	-----	1811+36			-----	-----	-----	547.3	12.3	CMG	-----	-----	-----
1802+20B			W LXR	M		-----	-----	-----	-----	-----	-----	-----	-----	-----
DF HER	M		467.5	12.0	CMG	-----	-----	-----	-----	-----	-----	-----	-----	-----

1859+47			1906+43			1915+17			482.5	13.4	CMG	471.471	12.9	CMG
WZ LYR	M		ST LYR	M		W SGE	M		490.5	13.0	CMG	475.534	13.0	CMG
484.4	10.3	CMG	500.4	12.2	CMG	470.5	9.8	CMG	500.4	12.5	CMG	483.392	12.5	CMG
490.5	10.3	CMG	530.4	10.5	CMG	475.6	9.4	CMG	505.4	12.4	CMG	485.403	12.6	CMG
500.4	10.7	CMG	541.3	10.5	CMG	482.5	9.9	CMG	533.3	10.2	CMG	500.441	13.8	CMG
505.4	10.7	CMG	547.3	10.4	CMG	490.5	9.9	CMG	541.4	10.1	CMG	502.380	13.7	CMG
530.4	11.4	CMG				500.4	10.1	CMG	547.4	10.1	CMG	503.358	13.7	CMG
541.3	12.4	CMG	1909+25			505.4	10.1	CMG				506.396	13.7	CMG
547.3	12.6	CMG	S LYR	M		530.4	10.9	CMG	1927-00			533.303	13.8	CMG
			470.5	13.2	CMG	541.3	11.4	CMG	ES AQL	RCB		547.412	13.0	CMG
1901+08			475.5	12.5	CMG	547.3	11.7	CMG	467.536	12.3	CMG	548.277	13.7	CMG
R AQL	M		482.5	12.6	CMG				471.516	12.5	CMG			
467.5	9.8	CMG	489.4	12.3	CMG	1916+37			490.434	12.8	CMG	1934+49		
475.5	10.5	CMG	500.4	11.9	CMG	U LYR	M		500.363	13.2	CMG	R CYG	M	
482.5	10.9	CMG	505.4	11.9	CMG	467.5	10.9	CMG	530.387	13.7	CMG	467.5	13.6	CMG
490.4	11.0	CMG	530.4	11.8	CMG	482.5	10.8	CMG	541.351	14.0	CMG	475.5	13.6	CMG
500.4	11.0	CMG	541.3	11.9	CMG	489.4	10.7	CMG				482.5	13.6	CMG
505.4	10.9	CMG	547.3	12.1	CMG	505.4	10.5	CMG	1929+28			490.5	13.9	CMG
530.4	10.2	BVE				530.4	10.4	CMG	TY CYG	M		500.4	14.0	CMG
530.4	10.4	CMG	1909+33			541.3	10.4	CMG	467.5	11.6	CMG	505.4	14.1	CMG
541.3	9.8	CMG	RS LYR	M		547.3	10.4	CMG	475.5	10.9	CMG	519.4	13.9	GGU
542.4	9.4	BVE	467.5	14.4	CMG				482.5	10.4	CMG	530.4	14.3	GGU
547.4	9.6	CMG	500.4	14.3	CMG	1918+31			489.4	10.4	CMG	533.3	13.9	CMG
						AN LYR	M		499.4	10.3	CMG	541.4	14.0	CMG
1901+27			1909+41			467.5	13.3	CMG	505.4	9.9	CMG	547.4	14.2	CMG
UU LYR	M		RU LYR	M		475.5	13.6	CMG	522.4	9.7	GGU			
470.5	12.7	CMG	467.5	13.0	CMG	482.5	14.0	CMG	530.4	9.6	BVE	1935+09		
484.4	12.6	CMG	475.5	12.4	CMG	500.4	14.6	CMG	531.3	9.7	GGU	RV AQL	M	
493.4	13.0	CMG	482.5	11.8	CMG				533.3	9.9	CMG	467.5	8.9	CMG
500.4	13.2	CMG	489.4	11.7	CMG	1921+50			541.4	9.9	CMG	475.5	8.9	CMG
			500.4	10.8	CMG	CH CYG	ZAND		541.4	10.2	GGU	482.5	8.9	CMG
1903+17			505.4	10.7	CMG	466.440	8.6	BMU	547.4	10.2	CMG	490.4	9.2	CMG
SV SGE	RCB		530.4	10.8	CMG	467.524	8.9	CMG	547.4	10.2	GGU	500.4	9.8	CMG
470.453	11.8	CMG	541.3	10.9	CMG	475.560	8.8	CMG	548.3	9.9	BVE	505.4	10.3	CMG
475.544	11.6	CMG	547.3	11.2	CMG	482.522	8.7	CMG				530.4	12.3	CMG
482.492	11.6	CMG				500.428	8.3	CMG	1932+27			541.4	12.8	CMG
493.422	11.5	CMG	1909+67			503.366	8.5	CMG	EH CYG	M		547.4	12.9	CMG
499.380	11.5	CMG	U DRA	M		519.413	8.9	GGU	522.4	10.5	GGU			
502.371	11.4	CMG	467.5	12.1	CMG	522.372	8.9	GGU	531.3	11.1	GGU	1937+31		
541.335	11.3	CMG	475.5	12.7	CMG	523.369	8.5	BMU	541.4	11.4	GGU	FU CYG	M	
547.341	11.3	CMG	482.4	12.8	CMG	523.370	8.7	VDE	547.4	12.0	GGU	471.5	13.6	CMG
			489.4	13.1	CMG	530.410	8.9	GGU				493.4	12.6	CMG
1903+33			499.4	13.2	CMG	530.412	8.7	BVE	1933+11			500.4	12.6	CMG
AB LYR	M		505.4	13.3	CMG	530.601	8.6	BMU	RT AQL	M		506.4	12.7	CMG
467.5	11.7	CMG	530.4	14.4	BVE	533.317	8.7	CMG	467.5	9.7	CMG	533.4	14.4	CMG
475.5	12.1	CMG	530.4	13.9	CMG	541.394	8.9	GGU	475.5	10.1	CMG			
482.5	12.8	CMG	541.4	14.2	CMG	541.429	8.4	CMG	482.5	10.0	CMG	1939+54		
500.4	14.2	CMG	547.3	14.1	CMG	547.398	9.0	GGU	490.4	9.9	CMG	V369 CYG	M	
						547.403	8.6	CMG	500.4	9.8	CMG	467.5	10.5	CMG
1905+27			1910+46			548.330	8.2	BVE	505.4	10.0	CMG	475.5	10.5	CMG
TY LYR	M		SS LYR	M					530.4	11.1	CMG	482.5	10.7	CMG
467.5	11.4	CMG	467.5	12.0	CMG	1922+01			541.3	11.3	CMG	490.5	10.9	CMG
475.5	11.8	CMG	475.5	11.5	CMG	TU AQL	M		547.4	11.4	CMG	500.4	11.2	CMG
482.5	12.0	CMG	482.5	11.3	CMG	467.5	10.6	CMG				505.4	11.8	CMG
493.4	12.8	CMG	489.4	10.7	CMG	475.5	11.1	CMG	1934+11A			533.4	12.8	CMG
500.4	12.9	CMG	500.4	10.6	CMG	490.4	12.1	CMG	SV AQL	M		547.4	11.3	CMG
505.4	13.7	CMG	505.4	10.5	CMG	500.4	13.2	CMG	484.4	11.4	CMG			
			530.4	10.9	CMG	530.4	13.9	CMG	490.4	11.2	CMG	1940+48		
1905+29A			541.3	11.4	CMG				500.4	11.0	CMG	RT CYG	M	
V LYR	M		547.3	11.4	CMG	1923+33			530.4	11.4	CMG	467.5	10.0	CMG
467.5	13.2	CMG				FL CYG	M		547.4	12.4	CMG	475.5	10.2	CMG
475.5	13.4	CMG	1910-07			500.4	12.7	CMG				482.5	11.3	CMG
482.5	13.7	CMG	W AQL	M		506.4	12.4	CMG	1934+28			490.5	11.9	CMG
500.4	14.4	CMG	467.5	12.8	CMG	533.3	11.9	CMG	BG CYG	M		500.4	11.5	CMG
			475.5	12.7	CMG	541.4	11.4	CMG	467.5	11.5	CMG	505.4	11.4	CMG
1905+29B			484.4	13.1	CMG				475.5	11.6	CMG	519.4	9.7	GGU
VZ LYR	M		490.4	13.0	CMG	1924+71			482.5	11.7	CMG	523.4	9.2	BMU
503.4	13.9	CMG	500.4	12.6	CMG	YZ DRA	M		489.4	11.9	CMG	523.4	9.1	VDE
			530.4	12.4	CMG	471.5	11.5	CMG	500.4	12.1	CMG	530.4	9.1	BVE
1906+27A			541.3	12.1	CMG	482.4	11.6	CMG	505.4	12.1	CMG	530.4	9.1	GGU
UV LYR	M		547.4	11.9	CMG	489.4	11.4	CMG	522.4	12.3	GGU	530.6	8.9	BMU
467.5	10.3	CMG				499.4	11.3	CMG	531.3	12.4	GGU	533.3	8.8	CMG
475.5	10.7	CMG	1913+50			505.4	10.4	CMG	533.3	12.3	CMG	541.4	8.5	CMG
482.5	10.8	CMG	TZ CYG	LB		530.4	11.6	CMG	541.4	11.7	CMG	541.4	8.4	GGU
493.4	11.3	CMG	519.4	11.0	GGU	541.4	12.2	CMG	541.4	12.1	GGU	547.4	8.0	CMG
500.4	11.7	CMG	530.4	11.1	GGU	547.3	12.6	CMG	547.4	11.9	CMG	547.4	7.6	GGU
505.4	11.8	CMG	541.4	10.8	GGU				547.4	11.8	GGU	548.3	7.9	BVE
530.4	12.9	CMG	547.4	10.8	GGU	1927+34								
						DD CYG	M		1934+30			1940+67		
						467.5	12.8	CMG	EM CYG	UGZ		ZZ DRA	M	
						475.5	13.1	CMG	470.469	12.5	CMG	471.5	12.4	CMG

489.435	12.2	BMU	475.5	12.2	CMG	482.5	12.2	CMG	533.3	13.7	CMG	490.4	11.0	CMG
493.388	12.1	CMG	483.5	12.3	CMG	490.4	11.8	CMG	547.4	14.0	CMG	500.4	11.6	CMG
500.486	12.1	CMG	490.4	13.4	CMG	500.4	11.2	CMG	-----	-----	-----	530.4	13.4	CMG
501.397	12.0	BMU	500.4	14.0	CMG	505.4	11.4	CMG	2055+47	-----	-----	531.4	13.2	BVE
506.391	12.1	CMG	-----	-----	-----	522.4	9.9	GGU	DH CYG	M	-----	-----	-----	-----
523.374	11.9	BMU	2035+37A	-----	-----	530.4	9.7	BVE	470.5	12.5	CMG	2105-16	-----	-----
523.375	12.1	VDE	FF CYG	M	-----	530.4	9.8	CMG	482.5	12.7	CMG	Z CAP	M	-----
526.416	12.0	BMU	470.5	14.0	CMG	541.4	9.7	CMG	490.5	12.8	CMG	503.4	10.8	CMG
529.356	12.1	BMU	475.5	14.0	CMG	547.3	9.7	CMG	500.4	12.9	CMG	541.4	9.5	CMG
529.358	12.0	VDE	490.5	13.0	CMG	548.4	9.5	BVE	533.4	11.5	CMG	-----	-----	-----
533.369	12.1	CMG	500.4	12.0	CMG	-----	-----	-----	541.4	11.5	CMG	2106+12	-----	-----
547.303	12.0	BMU	506.4	11.4	CMG	2041+02	-----	-----	547.4	11.4	CMG	AN PEG	M	-----
547.303	12.3	VDE	533.3	10.4	CMG	V AQR	SRA	-----	-----	-----	-----	470.5	11.2	CMG
548.273	12.0	CMG	541.4	10.7	CMG	531.3	9.3	BVE	-----	-----	-----	483.4	11.3	CMG
-----	-----	-----	547.4	10.5	CMG	-----	-----	-----	2059+23A	-----	-----	493.4	11.5	CMG
2016+47	-----	-----	-----	-----	-----	2041-04	-----	-----	R VUL	M	-----	500.4	12.0	CMG
U CYG	M	-----	2035-01	-----	-----	W AQR	M	-----	470.5	11.7	CMG	530.5	13.5	CMG
467.5	7.8	CMG	AE AQR	XP	-----	471.5	10.2	CMG	475.5	12.3	CMG	541.4	14.2	CMG
475.5	7.9	CMG	531.3	11.1	BVE	483.4	10.6	CMG	482.5	12.6	CMG	-----	-----	-----
482.5	7.9	CMG	-----	-----	-----	490.4	10.6	CMG	493.4	13.3	CMG	2108+12	-----	-----
490.5	7.9	CMG	2036+18	-----	-----	500.4	11.0	CMG	500.4	13.3	CMG	R EQU	M	-----
499.4	7.9	CMG	SZ DEL	M	-----	530.4	11.6	CMG	530.4	10.6	BVE	470.5	15.0	CMG
505.4	8.0	CMG	489.4	12.0	CMG	531.4	11.9	BVE	530.4	10.7	CMG	484.4	14.6	CMG
519.4	8.2	GGU	500.4	12.4	CMG	541.4	12.2	CMG	541.3	9.6	CMG	493.4	14.3	CMG
530.4	8.6	BVE	-----	-----	-----	547.4	12.5	CMG	547.4	9.3	CMG	500.4	14.3	CMG
531.3	8.2	GGU	2038+16	-----	-----	-----	-----	-----	548.4	9.3	BVE	530.4	13.4	CMG
533.3	8.2	CMG	S DEL	M	-----	2043+18	-----	-----	-----	-----	-----	541.4	12.1	CMG
541.4	8.3	CMG	467.5	10.6	CMG	V DEL	M	-----	2101+29	-----	-----	547.3	11.7	CMG
541.4	8.3	GGU	475.5	10.6	CMG	485.4	11.0	CMG	TW CYG	M	-----	-----	-----	-----
547.4	8.4	CMG	482.5	10.5	CMG	490.4	10.9	CMG	470.5	14.3	CMG	2108+36	-----	-----
547.4	8.7	GGU	490.4	10.7	CMG	500.4	10.4	CMG	484.4	14.4	CMG	DU CYG	M	-----
548.3	8.8	BVE	500.4	11.0	CMG	505.5	10.2	CMG	500.4	13.8	CMG	475.5	12.1	CMG
-----	-----	-----	505.4	11.5	CMG	530.4	10.7	CMG	533.3	12.9	CMG	490.5	12.4	CMG
2025+12	-----	-----	530.4	12.1	CMG	541.4	11.1	CMG	541.4	12.6	CMG	500.4	11.6	CMG
RX DEL	M	-----	541.4	12.3	CMG	547.3	11.1	CMG	547.4	12.9	CMG	506.4	11.1	CMG
471.5	11.7	CMG	547.3	12.7	CMG	-----	-----	-----	-----	-----	-----	533.3	10.6	CMG
475.5	11.1	CMG	-----	-----	-----	2044-05	-----	-----	2103+82	-----	-----	541.4	10.6	CMG
483.5	10.5	CMG	2038+47	-----	-----	T AQR	M	-----	X CEP	M	-----	547.4	10.6	CMG
490.4	10.0	CMG	V CYG	M	-----	467.5	9.4	CMG	467.5	9.1	CMG	-----	-----	-----
500.4	10.5	CMG	467.5	10.0	CMG	475.6	9.5	CMG	475.5	9.0	CMG	2108+68	-----	-----
530.4	11.4	CMG	475.5	10.0	CMG	483.4	10.2	CMG	482.5	9.0	CMG	T CEP	M	-----
541.4	12.2	CMG	482.5	9.8	CMG	490.4	10.3	CMG	500.4	9.2	CMG	467.5	7.6	CMG
547.3	12.2	CMG	490.5	10.0	CMG	500.4	10.9	CMG	505.4	9.2	CMG	475.5	7.2	CMG
-----	-----	-----	500.4	10.3	CMG	530.4	12.5	CMG	530.4	11.1	CMG	482.5	6.6	CMG
2028+17	-----	-----	505.4	10.3	CMG	531.3	13.0	BVE	541.4	11.1	CMG	489.4	6.5	CMG
Z DEL	M	-----	519.4	10.9	GGU	541.4	13.0	CMG	547.3	11.3	CMG	500.4	6.4	CMG
467.5	11.6	CMG	530.4	11.4	BVE	547.4	12.7	CMG	-----	-----	-----	505.4	6.5	CMG
475.5	10.9	CMG	531.3	10.8	GGU	-----	-----	-----	2104+15	-----	-----	519.4	6.4	GGU
482.5	12.5	CMG	533.3	11.1	CMG	2048+46	-----	-----	TZ PEG	M	-----	530.4	6.5	GGU
490.4	13.1	CMG	541.4	11.4	CMG	RZ CYG	SRA	-----	470.5	9.7	CMG	530.4	6.4	CMG
500.4	13.4	CMG	541.4	11.9	GGU	467.5	9.9	CMG	483.4	9.6	CMG	531.4	6.5	BVE
530.4	14.0	BVE	547.4	11.3	CMG	475.5	9.9	CMG	490.5	10.0	CMG	541.4	6.6	CMG
533.4	14.5	CMG	547.4	11.8	GGU	482.5	9.9	CMG	500.5	10.5	CMG	541.4	6.8	GGU
-----	-----	-----	548.3	11.5	BVE	490.5	10.4	CMG	506.4	11.4	CMG	547.3	6.7	CMG
2029+54	-----	-----	-----	-----	-----	500.4	10.9	CMG	530.5	12.0	CMG	-----	-----	-----
ST CYG	M	-----	2039+37	-----	-----	505.4	10.9	CMG	541.4	12.3	CMG	2109-03	-----	-----
467.6	11.0	CMG	DR CYG	M	-----	531.3	11.6	GGU	547.4	11.8	CMG	RR AQR	M	-----
475.5	10.7	CMG	470.5	13.4	CMG	533.3	11.2	CMG	-----	-----	-----	471.5	10.4	CMG
490.5	10.8	CMG	475.5	13.6	CMG	541.4	11.3	CMG	2105+58	-----	-----	483.4	10.5	CMG
500.4	10.5	CMG	490.5	12.8	CMG	547.4	11.5	CMG	UY CEP	M	-----	490.4	10.1	CMG
505.4	10.4	CMG	500.4	12.5	CMG	-----	-----	-----	467.5	10.9	CMG	500.4	10.3	CMG
533.3	10.1	CMG	506.4	11.9	CMG	2050+17	-----	-----	475.5	10.8	CMG	530.4	10.8	CMG
541.4	10.3	CMG	533.3	9.5	CMG	X DEL	M	-----	482.5	10.6	CMG	531.4	10.5	BVE
547.4	10.4	CMG	541.4	9.5	CMG	471.5	14.2	CMG	489.4	10.5	CMG	541.4	11.5	CMG
-----	-----	-----	547.4	9.5	CMG	485.4	14.1	CMG	500.4	10.6	CMG	547.4	11.8	CMG
2029+62	-----	-----	470.5	14.1	CMG	490.4	13.8	CMG	505.4	10.7	CMG	-----	-----	-----
BF CEP	M	-----	490.5	13.3	CMG	500.4	13.4	CMG	533.3	11.6	CMG	2116+14	-----	-----
467.5	14.5	CMG	500.4	12.9	CMG	505.4	12.6	CMG	541.4	12.0	CMG	X PEG	M	-----
489.4	14.8	CMG	533.4	11.5	CMG	530.4	10.1	BVE	547.3	12.4	CMG	467.5	10.2	CMG
-----	-----	-----	541.4	11.4	CMG	530.4	10.0	CMG	-----	-----	-----	475.5	9.8	CMG
2033+26	-----	-----	547.4	11.8	CMG	541.4	9.9	CMG	2105+87	-----	-----	482.5	9.9	CMG
BD VUL	M	-----	-----	-----	-----	547.3	9.8	CMG	X UMI	M	-----	490.5	9.9	CMG
470.5	11.3	CMG	2039-05	-----	-----	548.4	9.7	BVE	503.4	15.3	CMG	500.5	10.7	CMG
483.4	11.0	CMG	Y AQR	M	-----	-----	-----	-----	530.3	13.5	CMG	505.5	10.7	CMG
493.4	10.8	CMG	490.4	14.6	CMG	2050+30A	-----	-----	541.3	13.3	CMG	530.4	11.5	CMG
500.4	10.9	CMG	503.4	14.7	CMG	UX CYG	M	-----	547.3	12.9	CMG	541.4	13.0	CMG
533.4	8.9	CMG	-----	-----	-----	470.5	12.0	CMG	-----	-----	-----	547.4	13.0	CMG
-----	-----	-----	2040+16	-----	-----	475.5	12.6	CMG	2105-04	-----	-----	-----	-----	-----
2035+13	-----	-----	T DEL	M	-----	482.5	12.7	CMG	RS AQR	M	-----	2116-15	-----	-----
SS DEL	M	-----	471.5	12.5	CMG	490.5	12.9	CMG	471.5	10.4	CMG	T CAP	M	-----
467.5	12.0	CMG	475.5	12.5	CMG	506.4	13.3	CMG	483.4	10.7	CMG	503.4	11.2	CMG

541.4	9.5	CMG	485.397	11.9	VDE	530.4	9.9	CMG	2204+12		530.4	14.8	CMG
2118+00			489.363	8.8	CMG	541.4	9.8	CMG	T PEG	M			
RW AQR	M		489.394	8.7	BMU	547.3	9.9	CMG	503.4	14.2	CMG	2238+41	
471.5	9.8	CMG	490.445	8.7	CMG				530.4	12.4	CMG	R LAC	M
490.4	10.5	CMG	491.401	9.6	BMU	2144+43			541.4	12.0	CMG	467.5	12.4
500.4	11.1	CMG	493.388	10.7	CMG	WY CYG	M		547.4	11.9	CMG	475.5	12.5
530.4	13.4	CMG	499.374	12.1	CMG	467.5	11.5	CMG				482.5	13.1
			500.440	12.3	CMG	475.5	11.5	CMG	2206+13			493.4	13.4
			501.400	12.2	BMU	482.5	11.8	CMG	Y PEG	M		500.4	13.7
2122+16			501.538	12.3	CMG	490.5	12.1	CMG	500.5	14.4	CMG	533.3	14.2
TV PEG	M		502.360	12.2	CMG	500.4	12.7	CMG	530.4	12.2	CMG		
470.5	11.3	CMG	503.358	12.2	CMG	506.4	13.2	CMG	541.4	11.1	CMG	2245+17	
475.6	11.7	CMG	503.567	12.3	BMU	533.3	13.7	CMG	547.4	11.1	CMG	SX PEG	M
483.4	11.8	CMG	505.464	12.3	CMG	541.4	13.8	CMG				470.5	13.6
490.5	12.5	CMG	506.405	12.3	CMG	547.4	14.0	CMG	2207+14			500.5	11.7
500.5	12.8	CMG	519.442	9.2	GGU				RS PEG	M		530.4	10.9
533.4	14.6	CMG	522.370	10.7	GGU	2146+12			470.5	13.8	CMG	541.4	10.5
			522.389	10.5	BMU	AG PEG	ZAND		484.4	13.6	CMG	547.4	10.4
2125+69			522.392	10.5	VDE	531.4	8.8	BVE	490.5	13.8	CMG		
AX CEP	M		523.350	11.0	BMU	548.4	8.7	BVE	500.5	14.3	CMG	2255+42	
467.5	12.1	CMG	523.351	10.8	VDE				547.4	14.7	CMG	SZ AND	M
475.5	11.9	CMG	524.352	11.3	BMU	2151+47						482.5	10.3
482.5	11.8	CMG	524.353	11.3	VDE	LV CYG	M		2207+54			499.4	10.5
489.4	11.5	CMG	526.412	12.1	BMU	500.4	12.8	CMG	AB CEP	M		505.4	10.7
500.4	10.9	CMG	529.330	12.1	BMU	533.3	10.1	CMG	467.5	11.9	CMG	533.3	11.8
505.4	10.7	CMG	529.331	11.9	VDE	541.4	9.9	CMG	475.5	10.8	CMG	541.4	12.3
530.4	10.8	CMG	530.334	12.1	BMU	547.4	10.0	CMG	482.5	11.9	CMG	547.4	13.0
541.4	10.5	CMG	530.334	11.9	VDE				489.4	12.0	CMG		
547.3	10.4	CMG	530.408	12.0	GGU	2152+47A			500.4	12.0	CMG	2258+59	
			530.436	12.0	BVE	LX CYG	M		505.4	12.3	CMG	UV CAS	RCB
2126+10			530.440	12.2	CMG	475.5	13.8	CMG	533.3	13.6	CMG	501.5	11.0
UU PEG	M		531.324	12.1	GGU	483.4	14.0	CMG	547.3	13.6	CMG	533.4	11.1
470.5	13.8	CMG	531.339	12.1	BVE	500.4	13.8	CMG					
500.5	13.7	CMG	533.323	12.4	CMG	533.3	13.7	CMG	2209+12			2259+14	
530.5	13.4	CMG	541.314	12.2	BMU	541.4	13.3	CMG	RU PEG UGSS+Z			RW PEG	M
547.4	13.5	CMG	541.315	12.1	VDE	547.4	13.3	CMG	470.475	12.5	CMG	470.5	14.6
			541.316	12.0	GGU				471.516	12.5	CMG	500.5	14.6
2130+38			541.434	12.4	CMG	2156+05			483.410	12.5	CMG	530.4	12.7
V1426	CYG	M	542.334	12.2	BVE	V PEG	M		493.426	12.5	CMG	531.4	12.9
467.5	11.7	CMG	547.305	12.1	BMU	467.5	10.5	CMG	500.459	12.4	CMG	541.4	12.1
475.5	11.6	CMG	547.306	12.1	VDE	475.5	10.7	CMG	502.362	12.4	CMG	547.4	11.4
482.5	11.8	CMG	547.388	12.1	GGU	483.4	11.0	CMG	503.410	12.4	CMG	548.4	11.5
490.5	12.1	CMG	547.410	12.3	CMG	490.5	11.5	CMG	533.331	12.4	CMG		
499.4	12.4	CMG	548.274	12.2	CMG	500.5	11.8	CMG	541.369	11.1	CMG	2301+10	
505.4	12.3	CMG	548.347	12.0	BVE	530.4	13.4	CMG	547.366	11.0	CMG	R PEG	M
533.3	12.7	CMG				541.4	14.0	CMG				467.5	12.8
541.4	12.6	CMG				547.4	14.0	CMG	2219+55B			475.5	12.5
			2140+12						SU LAC	M		484.4	12.5
2136+78			TU PEG	M					470.5	11.4	CMG	490.5	12.4
S CEP	M		470.5	13.7	CMG	2159+34			483.4	11.7	CMG	500.5	12.3
467.5	8.4	CMG	500.5	13.1	CMG	RT PEG	M		493.4	11.8	CMG	530.4	12.0
475.5	8.3	CMG	530.4	12.1	CMG	470.5	11.1	CMG	500.4	12.1	CMG	541.4	11.3
482.5	8.1	CMG	541.4	10.2	CMG	475.5	11.1	CMG	505.5	12.4	CMG	547.4	10.9
489.4	8.0	CMG	547.4	10.6	CMG	482.5	11.4	CMG	533.3	13.2	CMG		
500.4	8.1	CMG				490.5	12.8	CMG	547.4	13.3	CMG		
505.4	8.1	CMG	2140+24			500.5	13.2	CMG				2307+59	
519.4	8.4	GGU	RR PEG	M		533.4	14.5	CMG				V CAS	M
530.4	8.6	GGU	470.5	9.8	CMG				2221+29			467.5	12.1
530.4	8.5	CMG	475.6	10.0	CMG	2201+33B			RV PEG	M		475.5	12.3
531.4	8.7	BVE	482.5	9.9	CMG	RZ PEG	M		471.5	15.0	CMG	482.5	12.5
541.4	8.5	CMG	490.5	10.1	CMG	470.5	12.7	CMG	503.4	15.0	CMG	490.4	12.7
547.3	8.3	CMG	500.5	10.6	CMG	475.5	12.7	CMG	533.4	11.7	CMG	491.4	13.2
			505.5	10.9	CMG	484.4	12.8	CMG	541.4	12.0	CMG	500.4	12.8
			530.4	12.6	CMG	490.5	12.8	CMG	547.4	12.0	CMG	505.4	12.2
2138+43			541.4	13.4	CMG	500.5	12.5	CMG				530.4	12.1
SS CYG	UGSS		547.4	13.7	CMG	530.4	11.3	CMG	2224+39			531.4	11.4
458.719	10.4	BVE				541.4	10.9	CMG	S LAC	M		531.5	11.1
466.438	12.0	BMU	2141+46			547.4	10.7	CMG	467.5	8.9	CMG	541.4	11.3
467.447	12.0	BMU	BN CYG	M					475.5	8.9	CMG	547.3	11.2
467.478	12.1	CMG	470.5	12.2	CMG	2203+37			482.5	9.1	CMG		
470.460	12.2	CMG	475.5	13.1	CMG	W LAC	M		490.5	9.6	CMG	2314+25	
471.433	12.1	BMU	482.5	13.4	CMG	470.5	11.7	CMG	500.4	9.7	CMG	W PEG	M
471.434	12.1	VDE	493.4	14.4	CMG	482.5	11.3	CMG	505.5	10.4	CMG	467.5	9.9
471.474	12.4	CMG				490.5	10.9	CMG	531.4	11.8	BVE	475.5	10.1
475.456	12.2	CMG	2143+73			500.4	10.8	CMG	533.3	11.8	CMG	482.5	10.0
482.524	12.3	CMG	PQ CEP	M		505.5	10.8	CMG	541.4	12.1	CMG	490.5	10.2
483.385	12.3	CMG	467.5	10.1	CMG	533.3	10.5	CMG	547.4	12.3	CMG	499.4	10.3
484.397	12.1	BMU	475.5	9.8	CMG	541.4	10.3	CMG				505.5	10.4
484.412	12.4	CMG	482.5	9.6	CMG	547.4	10.5	CMG	2229+24			530.4	11.5
484.434	12.1	VDE	489.4	9.7	CMG				SS PEG	M		541.4	11.9
485.379	11.7	CMG	500.4	10.0	CMG				470.5	13.4	CMG	547.4	11.7
485.396	12.0	BMU	505.4	9.9	CMG				500.5	14.2	CMG		

2315+08			SV CAS	SRA	475.5	12.7	CMG	
S PEG	M		470.5	9.2	CMG	490.5	13.2	CMG
467.5	13.6	CMG	483.5	9.2	CMG	500.5	13.3	CMG
475.6	13.6	CMG	493.4	9.2	CMG	505.5	13.7	CMG
500.5	13.0	CMG	502.4	9.2	CMG	530.4	13.2	CMG
530.4	12.0	CMG	548.3	8.7	CMG	531.4	12.7	BVE
541.4	11.4	CMG				541.4	13.5	CMG
547.4	11.3	CMG	2338-15			547.4	12.4	CMG
			R AQR	M		548.4	12.3	BVE
2315+39			501.5	7.2	CMG			
RY AND	M					2357-15		
533.3	14.0	CMG	2339+56			W CET	M	
547.4	13.9	CMG	Z CAS	M		501.6	9.4	CMG
			467.5	12.4	CMG			
2318+39			475.5	12.6	CMG	2358+55A		
BU AND	M		482.5	12.7	CMG	Y CAS	M	
470.5	11.0	CMG	490.4	12.9	CMG	467.5	12.3	CMG
475.6	10.9	CMG	500.4	12.9	CMG	475.5	12.7	CMG
482.5	10.9	CMG	530.4	13.4	CMG	482.5	12.8	CMG
493.4	10.9	CMG	541.4	13.8	CMG	490.4	13.1	CMG
500.5	11.0	CMG	547.3	13.7	CMG	500.4	13.4	CMG
533.3	11.6	CMG				530.4	13.9	CMG
541.4	12.2	CMG	2343+15			541.4	14.0	CMG
547.4	12.3	CMG	DL PEG	M		547.3	14.2	CMG
			500.5	13.4	CMG			
2318+78			533.4	10.3	CMG	2359+39		
RY CEP	M		541.4	10.2	CMG	SV AND	M	
467.5	10.6	CMG	547.4	10.3	CMG	470.5	14.0	CMG
475.5	10.4	CMG				500.5	13.3	CMG
500.4	10.7	CMG	2349+56			505.4	13.2	CMG
505.4	10.6	CMG	rho CAS	SRD		533.3	11.9	CMG
519.4	11.3	GGU	471.5	4.9	CMG	541.4	11.6	CMG
530.4	12.1	GGU	483.4	4.9	CMG	547.4	11.1	CMG
530.4	12.3	CMG	500.5	4.9	CMG			
541.4	13.0	CMG	533.4	4.9	CMG			
547.3	13.0	CMG	548.3	5.0	CMG			
2326+42			2350+53					
BG AND	M		RR CAS	M				
500.5	13.6	CMG	467.5	11.2	CMG			
533.3	11.2	CMG	475.5	11.2	CMG			
541.4	11.1	CMG	482.5	11.2	CMG			
547.4	10.6	CMG	490.4	11.3	CMG			
			500.4	11.7	CMG			
2328+48			505.4	11.8	CMG			
Z AND	ZAND		530.4	13.0	CMG			
467.481	10.6	CMG	531.4	12.8	GGU			
475.556	10.6	CMG	541.4	13.4	CMG			
482.537	10.7	CMG	547.3	13.4	CMG			
490.492	10.7	CMG						
491.422	10.9	BMU	2352+55					
499.426	10.7	CMG	WY CAS	M				
524.354	10.8	BMU	467.5	8.7	CMG			
524.355	11.0	VDE	475.5	8.7	CMG			
529.359	10.8	BMU	482.5	9.1	CMG			
529.360	10.6	VDE	490.4	9.1	CMG			
531.483	10.6	BVE	500.4	9.4	CMG			
533.338	10.6	CMG	505.4	9.4	CMG			
541.402	10.5	CMG	530.4	10.3	CMG			
547.382	10.4	CMG	541.4	10.3	CMG			
548.372	10.2	BVE	547.3	10.6	CMG			
2331+09			2352-09					
FF PEG	M		V CET	M				
500.5	11.0	CMG	501.5	14.3	CMG			
533.4	11.1	CMG						
541.4	11.7	CMG	2353+50					
547.4	12.5	CMG	R CAS	M				
			467.5	11.4	CMG			
2333+35			475.5	11.7	CMG			
ST AND	SRA		482.5	11.9	CMG			
470.5	9.5	CMG	490.4	12.2	CMG			
475.6	9.4	CMG	499.4	12.6	CMG			
482.5	9.6	CMG	505.4	12.4	CMG			
493.4	9.7	CMG	530.4	12.1	CMG			
500.5	9.6	CMG	541.4	11.7	CMG			
505.4	9.8	CMG	547.3	11.7	CMG			
533.3	10.2	CMG						
541.4	10.4	CMG	2355+25					
			Z PEG	M				
2334+51			467.5	12.5	CMG			

Mededelingen van het Bestuur

1) Bestuurssamenstelling

Zoals U waarschijnlijk wel in de kop van de eerste pagina van deze Variabilia zal zijn opgevallen, is het bestuur onlangs gewijzigd. R.Johanns heeft als lid bedankt, en met zijn plaats is ingenomen door E. van Ballegoij, die als interim-recorder zal gaan functioneren. Stuurt U dus de waarnemingen van October 2002 naar zijn e-mailadres, graag binnen 5 dagen na afloop van die maand en dus ook in het vervolg ! Tevens is Guus Gilein als interim-bestuurslid toegetreden, hij zal de homepage van de Werkgroep gaan verzorgen. Als U een bijdrage hiertoe wilt leveren, neem dan met hem contact op. Het bestuur is bijzonder verheugd, dat we deze beide actieve waarnemers als interim-bestuurslid kunnen begroeten, op de komende ledenvergadering op 26 April 2003 zullen deze punten op de agenda komen te staan.

2) Homepage

Zoals boven vermeld, zal G.Gilein de redactie van een eigen WVS-homepage gaan verzorgen. Deze kan men vinden onder <http://www.veranderlijkesterren.info/> Zulks o.a. in samenwerking met R.J.Bouma en E.van Dijk, voor het leggen van links etc. Indien U een bijdrage hebt voor die homepage (zoals foto's en actuele informatie) kunt U zich met hem in verbinding stellen.

3) Waarnemingsinstructie en Invoerprogramma

Er is een nieuwe versie 1.2 van de waarnemingsinstructie verschenen. Deze vindt U via de link van de WVS-homepage op www.shopplaza.nl/astro/ We blijven voorlopig ons eigen "oude" invoerprogramma (versie 6.01) gebruiken.

4) Contributie 2003

Denkt U om de contributiebetaling voor het jaar 2003? Deze bedraagt Euro 10. Het gironummer van de penningmeester vindt U bovenaan pagina 1.

5) AAVSO-CD

Er zijn 2 nieuwe AAVSO-CD's verschenen, met kaarten en een tekstgedeelte. Deze zijn gratis, maar er moet \$10.- worden betaald voor verzendkosten. U vindt informatie om deze CD's te bestellen op de wellicht bekende AAVSO-website <http://www.aavso.org>

6) De AFOEV-meeting in Bourbon-Lancy

Deze internationale meeting vond plaats in Bourbon-Lancy (Bourgogne), de woonplaats van Michel Verdenet, de huidige voorzitter van de AFOEV. Ze werd door een vijftigtal deelnemers uit de hele wereld bezocht, met Janet Mattei de directeur van de AAVSO als meest prominente figuur. De meeting vond plaats in het plaatstelijke theater, en was goed georganiseerd. Uw secretaris was als vertegenwoordiger van de Werkgroep en als lid van het Scientific Committee aanwezig. Er waren naast de voordrachten door amateurs ook drie z.g. "invited talks" door vakastronomen. Zelf hield ik een praatje met als onderwerp "negative observations : useful or useless ?" Hierop kwam enige discussie los, wat ook de bedoeling van de spreker was. Aan de hand van de lichtkromme van het zwakke minimum van RX And in 1996 met een "ruwe" en "gekuiste" versie (met en zonder zwakker dan-waarnemingen) werd het betoog ondersteund. Een excursie naar de radiosterrenwacht van Nancay en een diner werd deze geanimeerde, maar toch wat mager bezochte bijeenkomst besloten. Een belangrijk aspect van dit soort conferenties is, naar mijn ervaring, dat je vele mensen leert kennen, wier namen je voorheen alleen van de e-mail kent, en dat je oude bekenden weer ontmoet. Onze Belgische collega's waren met vier personen het best op deze bijeenkomst vertegenwoordigd.

Georg Comello (secretaris)

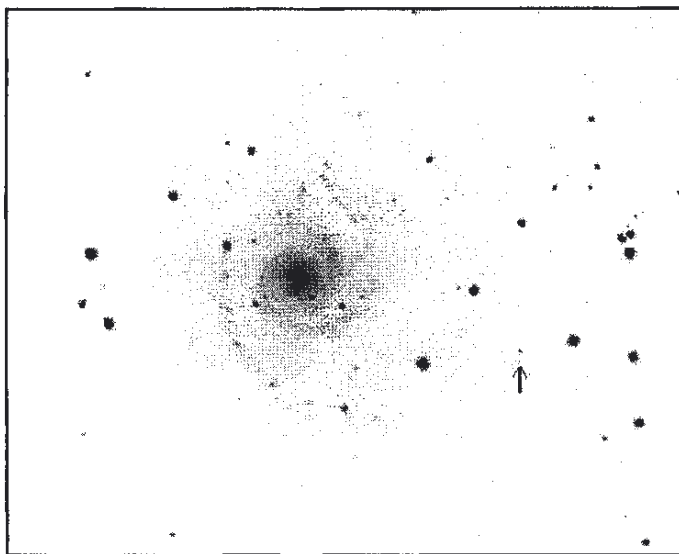
SN 2002 ap in M74

Deze heldere SN werd eind Januari ontdekt, maar hij is ondanks het feit dat hij magnitude 12.5 bereikte door leden van de WVS maar weinig waargenomen (zie Variabilia 68 & 69).

Dit was vooral te wijten aan het feit dat de SN tamelijk snel in de avondschemering verdween. Na conjunctie met de zon, was hij te zwak geworden voor visuele waarnemers, maar op 8 October j.l. slaagde Henk Munsterman erin dit zeer zwakke object alsnog met zijn Celestron C14 f/7 en ST-9E CCD-camera in kleur vast te leggen.

Hij combineerde hiervoor 4 opnamen: 1 zwart-wit opname van 10 minuten, en 3 opnamen van elk 5 minuten in rood, groen en blauw.

Onderstaande opname is een bewerking hiervan.



De kleurenversie kan op de homepage van de WVS gevonden worden:

<http://www.veranderlijkesterren.info>

Klik hiervoor door naar de rubriek 'nieuws'.

Op die opname komt duidelijk de wat gelige kleur van M74 naar voren, alsook de rode kleur van de supernova. De helderheid van de supernova is duidelijk geringer dan de zwakst aangegeven ster van magnitude 17.1 op de AAVSO f-kaart, en ligt vermoedelijk ergens tussen magnitude 18 en 19.

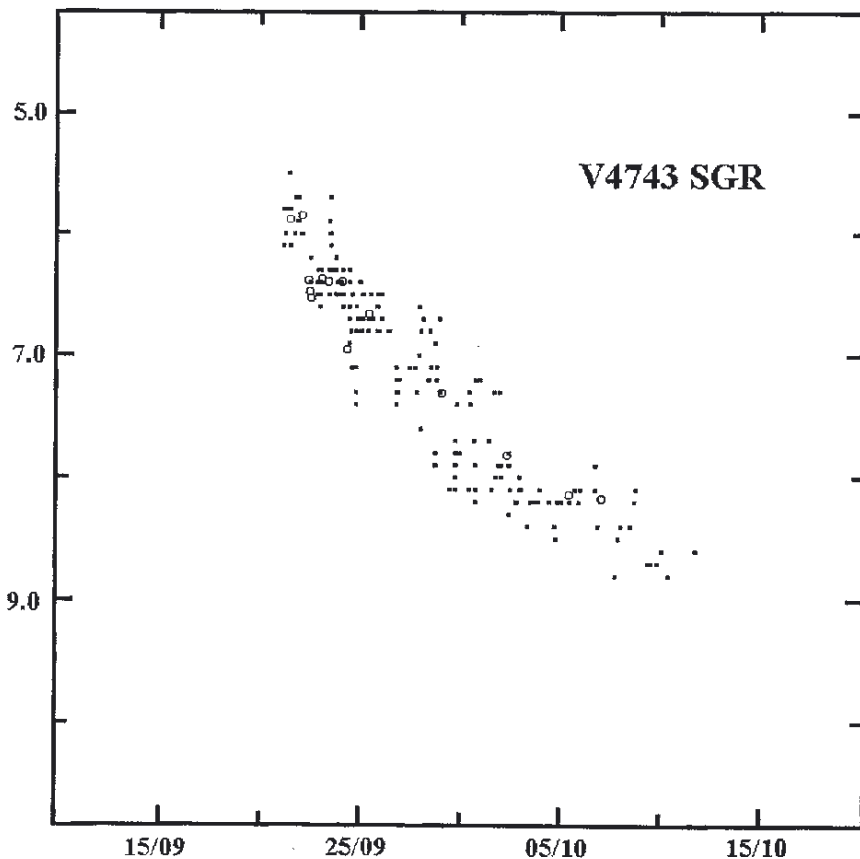
Twee heldere novae in Sagittarius.

Op 15 september werd door William Liller (Vina del Mar, Chili) fotografisch een nova van magnitude 8 gevonden in Sagittarius. Helaas stond deze nova voor ons erg ongunstig op declinatie -25 graden, en er werden dan ook vanuit Nederland slechts een paar waarnemingen verricht. Spectroscopie toonde aan dat dit een nova is van het Fe (II)-type. Hij werd snel lichtzwakker, en is momenteel (20 oktober) ongeveer magnitude 11.5. Hij ontving kort na ontdekking de definitieve aanduiding V4742 Sgr.

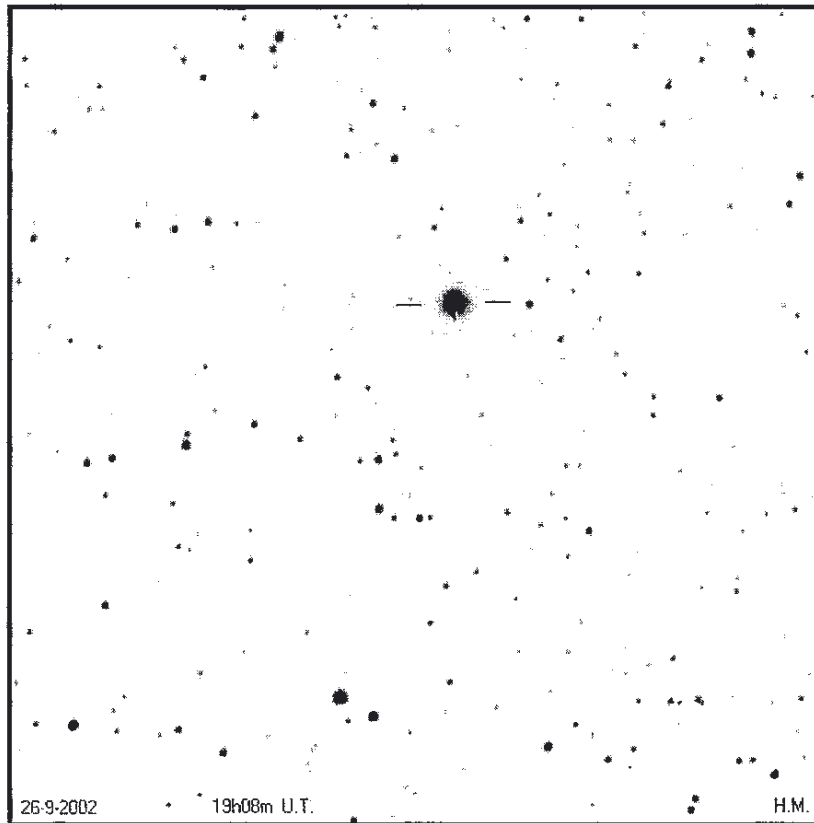
Slechts 5 dagen na bovenstaande ontdekking werd door de Japanse amateur Katsumi Haseda eveneens fotografisch een andere mogelijke nova gevonden, en deze was van de 5^e grootte! Binnen 24 uur werd duidelijk dat het inderdaad een nova was: spectroscopie wees op een Fe(II)-type kort na maximum, en op de positie van Haseda's nieuwe ster [R.A. 19h01m09.4s, Dec. -22gr00'06" (J2000.0)] werd op oude opnamen een sterretje van magnitude 16.8 gevonden.

De amplitude van ongeveer 11.5 magnituden is redelijk normaal voor novae. Bovenvermelde positie was voor Nederlandse waarnemers iets gunstiger, evenals de helderheid. Hij werd in de afgelopen weken dan ook met enige regelmaat waargenomen. Helaas is ook deze nova vrij snel aan het verzwakken: momenteel (20 oktober) ligt de helderheid rond magnitude 9.

In de volgende figuur is het helderheidsverloop in de eerste 20 dagen na ontdekking gegeven. De data zijn ontleend aan VSNET. De kleine vierkantjes zijn visuele helderheidsschattingen, de open cirkels CCD-V helderheden.



Kort na ontdekking ontving deze ster de definitieve aanduiding V4743 Sgr.
Onderstaande opname werd op 26 September door Henk Munsterman in
Meppel gemaakt; hij gebruikte een Celestron C14 f/7 en ST9E-CCD camera.
Er werd 60 seconden belicht door een roodfilter.
Het veld is ongeveer 14x14' groot.



Meer foto's (en verdere informatie) van beide novae zijn te vinden op de homepage van de werkgroep onder de link 'nieuws'. In de sectie 'kaarten' zijn 2 kaarten met vergelijksterren tot magnitude 11.7 te vinden voor V4743 Sgr.